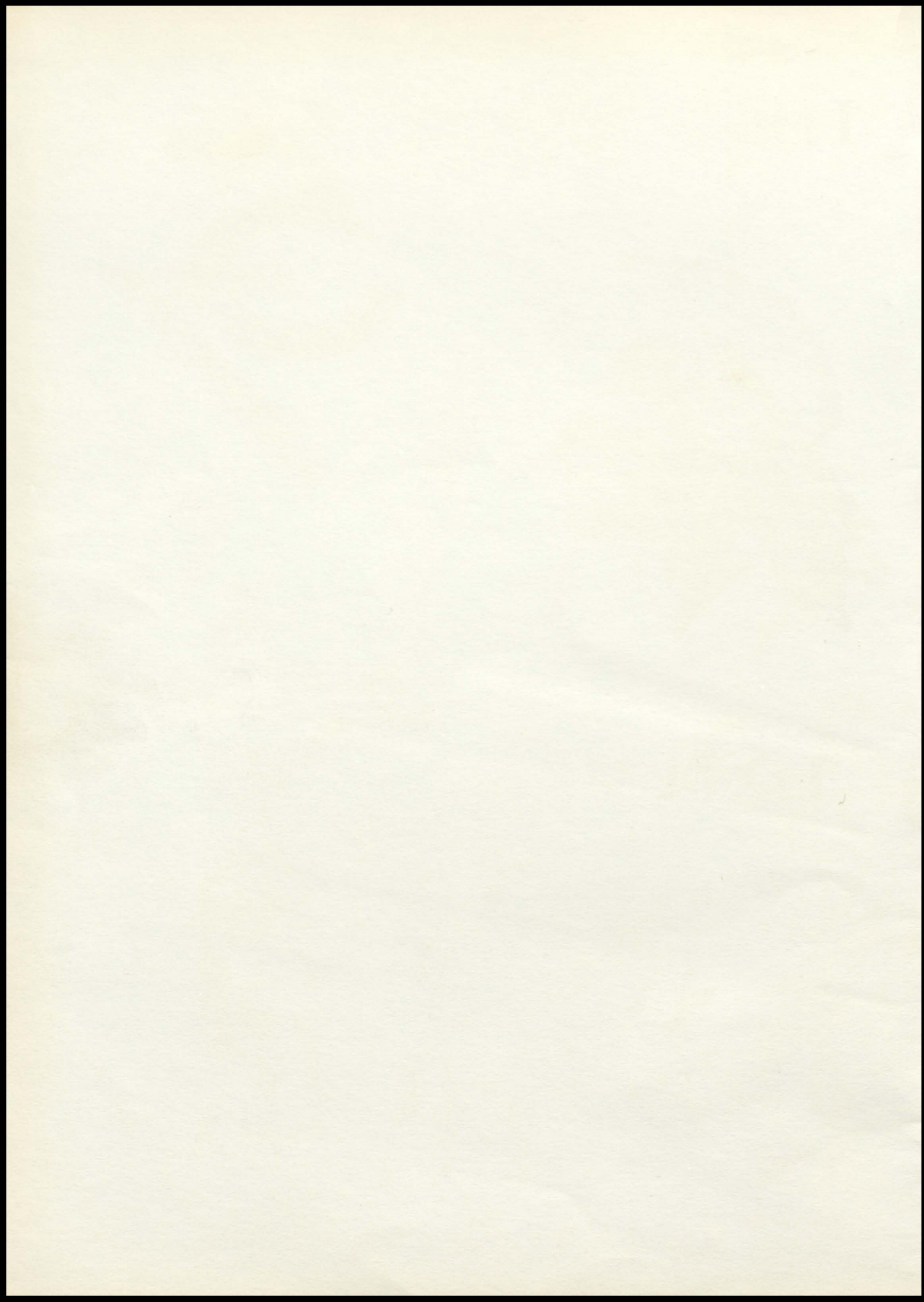


The Totem Pole

1957



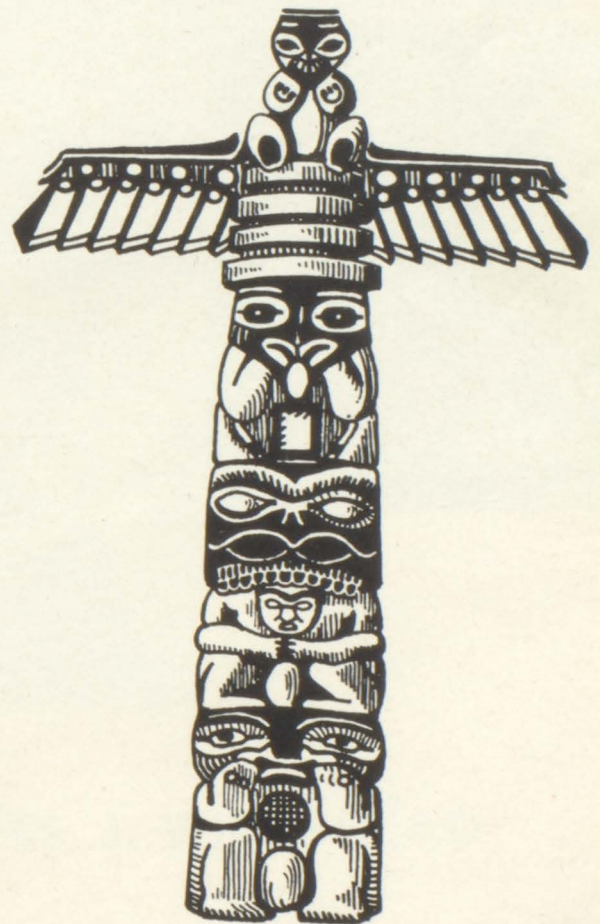




THE



TOTEM



POLE

BONNER SPRINGS RURAL HIGH

# TABLE of CONTENTS

ADMINISTRATION	3
CLASSES	11
ORGANIZATIONS	41
ATHLETICS	55
ACTIVITIES	63

# ADMINISTRATION



OUR PRINCIPAL JAMES J. WHITEHEAD

1957 PRESIDENT OF KSTA

# BOARD of EDUCATION



CLERK Judge Leroy Bradfield



CHAIRMAN Lawrence Platt



TREASURER Lawrence Roudybush

The Rural High School District #4 of Wyandotte County, in addition to Principal J. J. Whitehead, has a member from Bonner Springs, Lake of the Forest and Edwardsville as pictured above. The Board meets the last Thursday of each month.

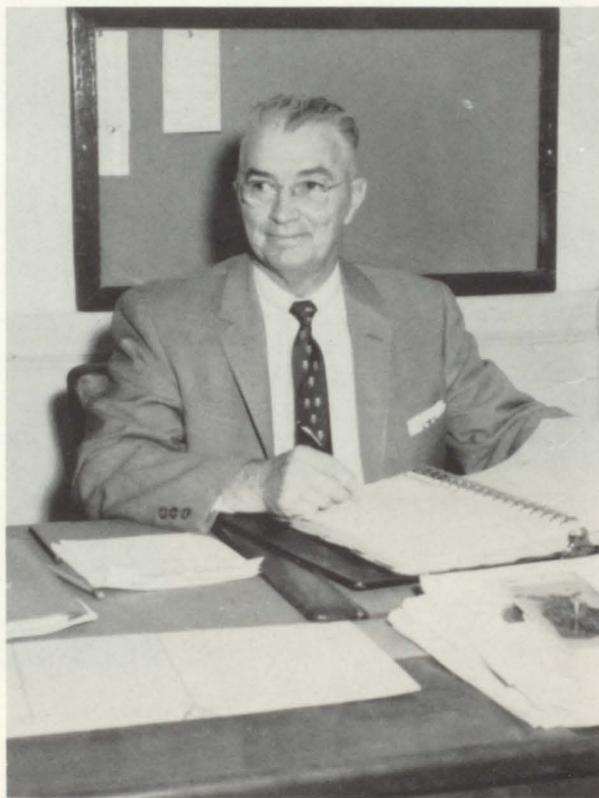
Two friendly faces seen in the office are those of Mr. Mize and Mrs. Gorsky, without whom numerous and miscellaneous tasks would go wanting.

## SECRETARY

MRS. E. A. GORSKY (Jean)



## VICE-PRINCIPAL



MR. PAUL MIZE



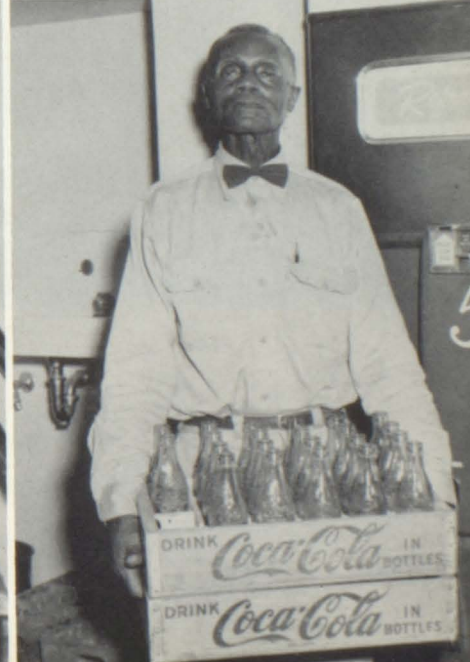


# PERSONNEL

## THE FACULTY

COOKS: Mrs. Tate, Mrs. Jennings

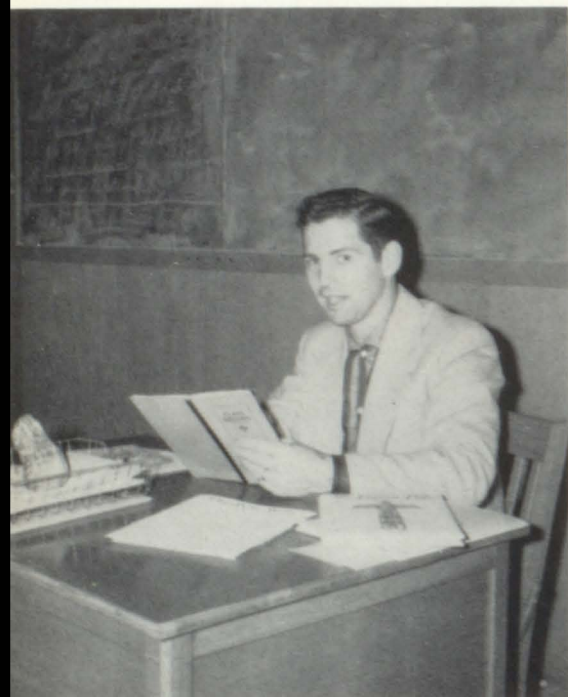
CUSTODIANS: Mr. Nelson, Mr. Hatcher, Mr. (Happy) Toombs





BETTY J. BARNES  
Mathematics  
B.S. in Ed., M.S. in Ed.  
Kansas State Teachers College  
Pittsburg, Kansas  
Junior Sponsor

ELAINE CARLSON  
Home Economics  
B.S. in Ed.  
University of Kansas  
Pep Club Sponsor  
F.H.A. Sponsor  
Junior Sponsor



RUSSELL C. CRAIG  
Speech, Journalism, Dramatics  
B.S. in Ed.  
Kansas State Teachers College  
Pittsburg, Kansas  
Junior Play, Senior Play  
Yearbook Advisor  
Newspaper Advisor



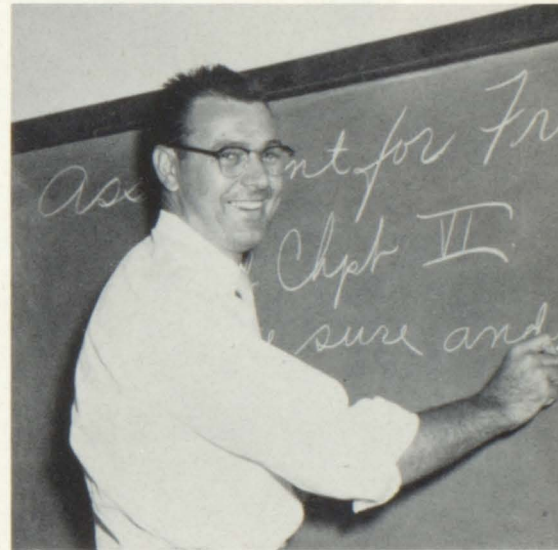
HUGH FERGUSON  
Music  
B.S. in Ed.  
Central Missouri State  
College  
M.S. in Ed.  
University of Kansas  
Band, Dance Orchestra  
Vocal Music

CHARLES O. GALVIN  
Art  
B.S. in Art Education  
Kansas State Teachers  
College, Pittsburg  
Art Club Sponsor



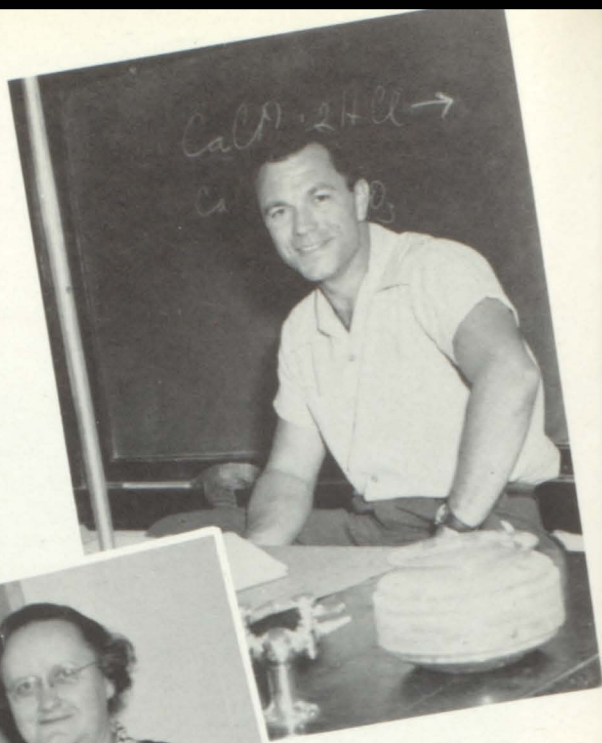
NETTIE GORTON  
English  
A.B. -- M.A.  
Northeastern Teachers College  
Tahlequah, Oklahoma  
University of Kansas  
Freshmen Sponsor

EDWIN A. GORSKY  
Social Science, Coaching  
A.B.  
College of Emporia  
Senior Sponsor



WILLIE H. HILBERT  
Drivers' Education, Citizenship  
B.S.  
Kansas State College  
Sophomore Sponsor

VAUGHN KIMBROUGH  
Physical Education, Coaching  
B.A. Degree  
Ottawa University  
Sophomore Sponsor  
B-Club Sponsor

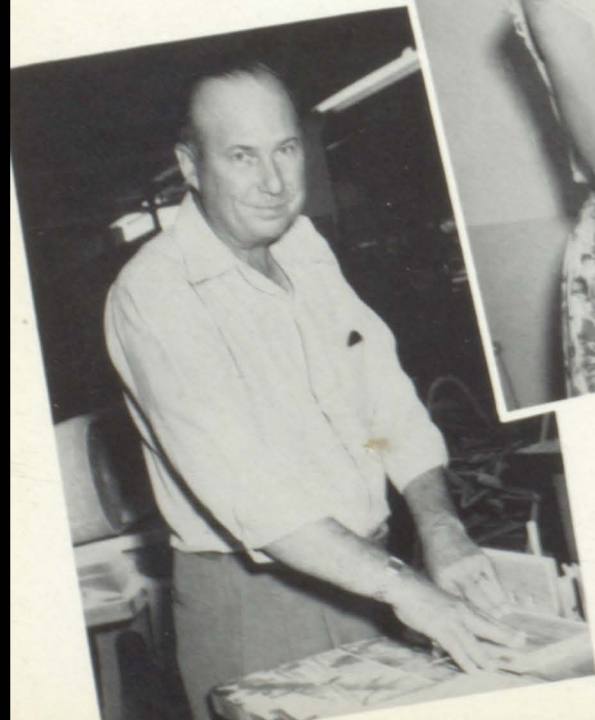


IRIS LEE  
Languages  
A.B. Degree  
College of Emporia  
M.S. Degree  
Emporia State Teachers College  
Sophomore Sponsor  
French Club  
Spanish Club



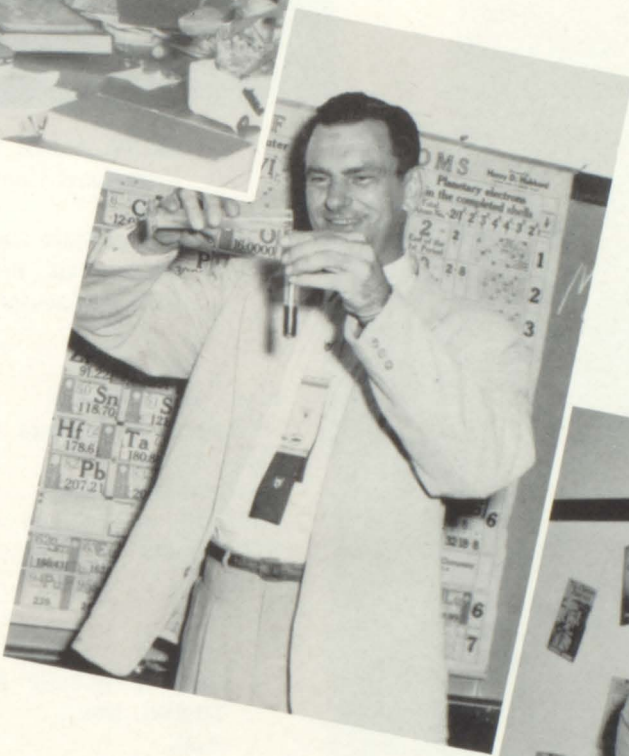
MRS. LYSLE MIDDAGH  
Commerce  
B.S. in Education  
M.S. in Education  
University of Kansas  
Senior Sponsor

GEORGE PFLAUMER  
Industrial Arts  
B.S. Degree  
Northwest State Teachers College  
Marysville, Missouri





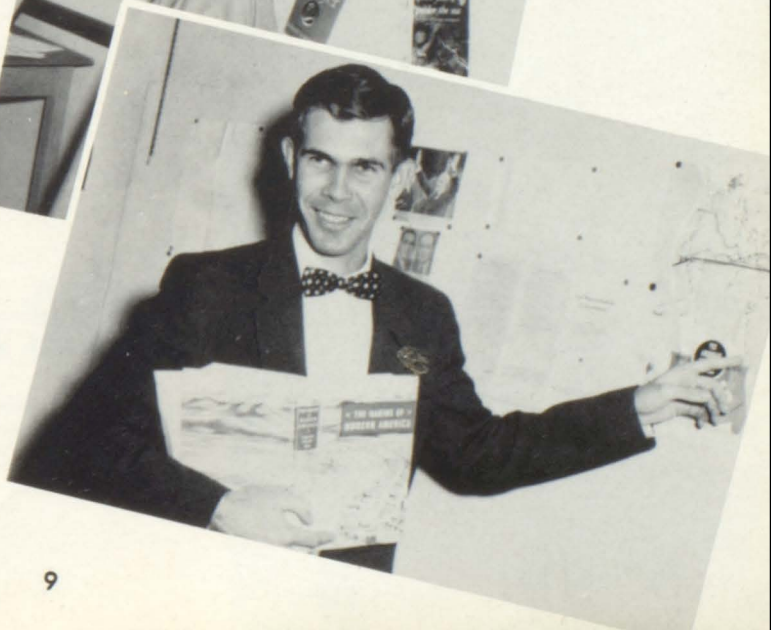
BERNICE SETTLES  
Librarian  
A.B. Degree  
Ottawa University



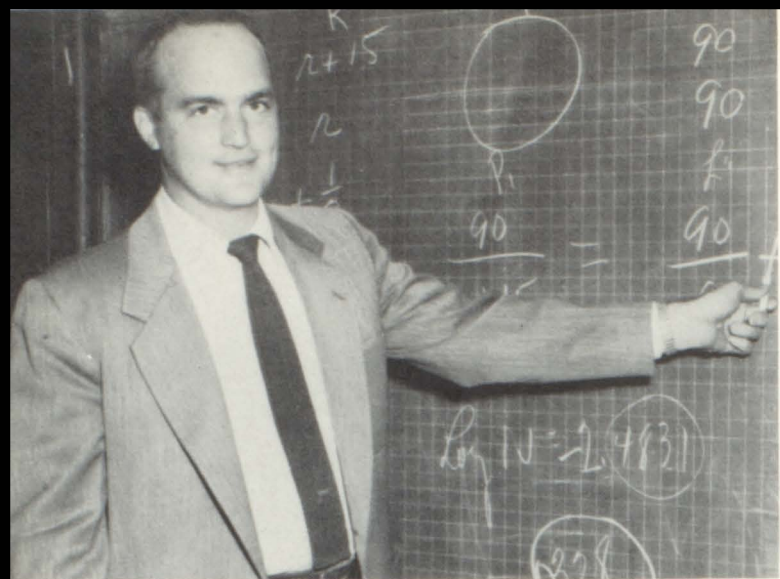
FRED R. SNYDER  
Science, Chemistry, Coaching  
B. S. Degree  
M. S. Degree  
Kansas State College  
Student Council Sponsor  
Supt. of Transportation



MRS. DORIS STITH  
English, Latin  
A.B. in Education  
State Teachers College  
Kearney, Nebraska  
Graduate Work  
Greeley, Colorado  
Sophomore Sponsor



MAX A. THOMPSON  
Social Science  
B. S. in Journalism  
B. S. in Education  
University of Kansas  
Junior Sponsor



KENNETH TEWELL  
 Mathematics, Coaching  
 B.S. in Ed.  
 Kansas State Teachers  
 College, Emporia  
 Freshmen Sponsor



MARY ALICE TOBUREN  
 Vocational Homemaking  
 B.S.  
 Kansas State College  
 Junior Class, Pep Club,  
 F.H.A. Sponsor

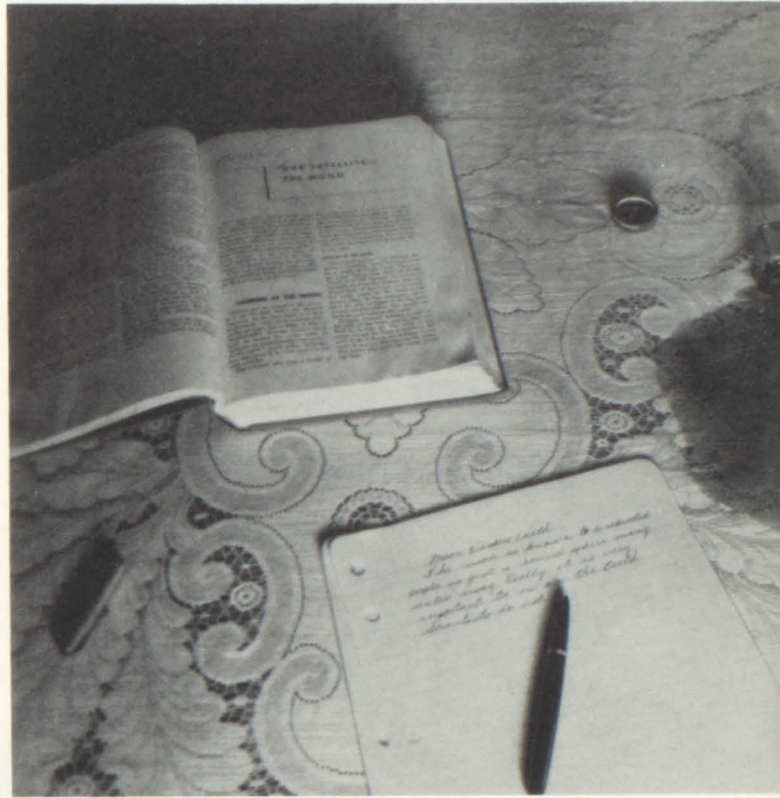


L. L. VAN PETTEN  
 Vocational Agriculture  
 B.S., M.S.  
 Kansas State College  
 University of Colorado  
 FFA Sponsor

ROBERT VENTURELLA  
 Typing  
 B.S. in Ed.  
 Kansas State Teachers  
 College, Pittsburg  
 Freshmen Sponsor

MRS. ARROLINE ZUMBRUNN  
 English, Music  
 A.B.  
 University of Wichita  
 Freshmen Sponsor





# CLASSES



CLASS OFFICERS:

Treasurer: Lynn Milliken  
 Secretary: Alice Matthews  
 Vice-President: John Harrington  
 President: John Stark

SPONSORS:

Mrs. Middaugh  
 Mr. Gorsky

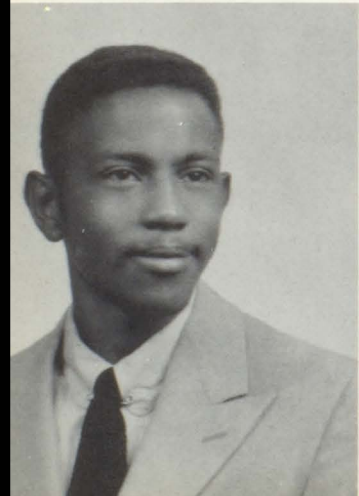


EARL ARNOLD

Bible Club 1, 2; Art Club 4; F.F.A. 2, 3, 4; Football 1, 3; Basketball 1; Track 1, 3.

ANNA ASKEW

Student Librarian 4; Latin Club 4.



ERROL BALLANCE

Washington High, Bethel, Kansas, 1, 2; Bible Club 3; Spanish Club 3; Basketball 3.

BARBARA BALENTINE

Senior Play 4; Pep Club 1, 2, 3; Debate 4; Pow Wow Staff 4; Mixed Chorus 1, 2, 3; Music Festival 3, 4; Exchange Assembly 4.

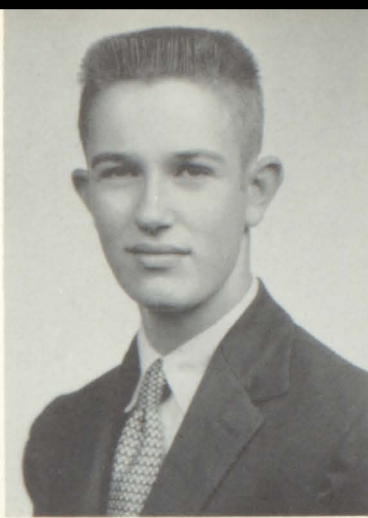


LARRY BARNES  
F.F.A. 1,2,3,4; Mixed Chorus 4; Bible Club 4.

TEX BEATY  
Basketball 2.

DOROTHY BERRY  
Aurora, Illinois; Eldon, Iowa, 1,2.

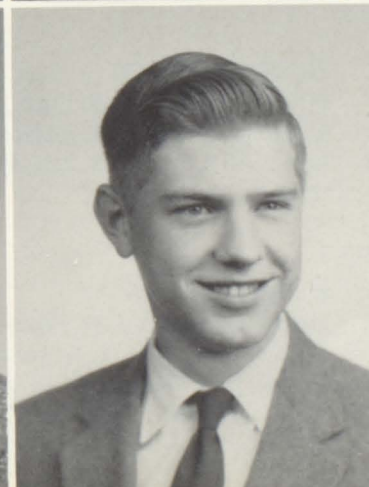
JEANETTE BEVER  
Student Librarian 2,3,4.



ARDELLA BOLTON  
Mixed Chorus 3; Bible Club 3; Pep Club 1; Music Festival 3.

MARTHA BRANSON  
Mixed Chorus 1; Glee Club 2; Exchange Assembly 3; Band 1,2,3,4; Pep Band 1,2,3,4; Honor Banquet 1,2; Class Officer 2; Student Council 2; Junior Play; Senior Play; Thespian 4; Pep Club 1,2,3,4, President 4; Pow Wow Staff 4; Annual Editor 4; Queen Attendant 1; Music Festival 1,2,4; District Contest 1,2,4; Flag Twirler 3,4; Spanish Club Secretary 3, Club 3,4.

WALTER BRAUER  
Class Officer 1,2,3; Exchange Assembly 3; Honor Banquet 1,2,3; Student Council 3, President 4; Junior Play; Senior Play; Thespian Officer 3,4; Quill and Scroll 3,4; Photo Club Officer 3; Football 1; Track 2; Debate 2; Pow Wow Staff 3,4; Annual Staff 4; Boy's State 3; Speech Festival 2,3; Spanish Club 3,4; Kansan Correspondent 3.



LARRY BUSHNELL  
Photo Club 3; Band 3; Senior Play; Junior Play; Thespian 4; Annual Staff 3,4; French Club 3,4.



GLENN CLARK

Bible Club 1,2,3,4; F.F.A. 1,2,3,4, Treasurer 4.



MARY JO COCHRAN

Central, Kansas City, Missouri 1,2; Mixed Chorus 3; Glee Club 4; Exchange Assembly 3,4; Student Director Play 3; Pep Club 3,4; Cheerleader 4; Pow Wow Staff 4; Football and Basketball Queen Attendant 3; Music Festival 3,4; State District Award 3; Girl's Quartet 4; Flag Twirler 3; Popularity Candidate 3.



MARSHA COX

Pittsburg, Kansas 1,2,3.



MARY LOU CUNNINGHAM

Photo Club Secretary 3; Bible Club 1,2; Honor Banquet 1,2; Class Secretary 2; Pep Club 1,2,3,4; Spanish Club 3,4; Senior Play.



JO ANN DANGERFIELD

Mixed Chorus 2; Bible Club 3; Pep Club 1, Music Festival 2; Spanish Club 2; Exchange Assembly 4.



ALVIN FAUNCE

Basketball 1; F.F.A. 1,2,3,4; Spanish Club 1.



RICHARD FELEAY

Mixed Chorus 2,3,4; Photo Club 3; Band 1,2,3,4; Honor Banquet 3; Football 1,2,3,4; Basketball 1,2,3; Track 1,2,3,4; B-Club; Music Festival 3.

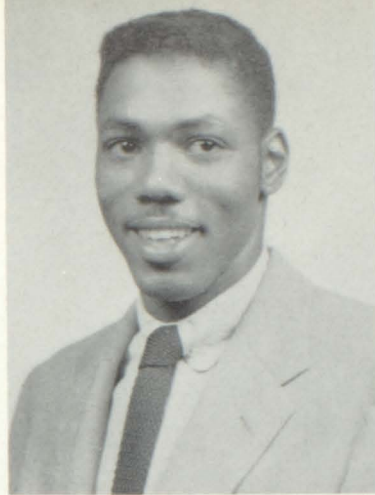


SUSAN FLEMING

Mixed Chorus 2,3,4; Photo Club 3; Band 1,2,3,4; Honor Banquet 1,3; Senior Play, Pep Club 1,2,3,4; Pow Wow Staff 4; Annual Staff 4; Girl's State 3; Music Festival 1,2,3,4; French Club 3,4; Flag Twirler 4; Dance Band 2,3,4; Latin Club 4.

JEROLD FLETCHER

Football 1,2,3,4; Co-captain 4; Basketball 1; Track 1,2,4; B-Club; Mixed Chorus 4; Bible Club 1,2; Art Club 3; Speech Festival 2; Music Festival 4.

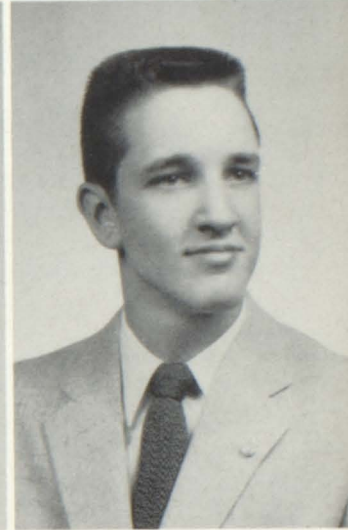


JERRY GEBHARDT

Track 1,2,3,4; Debate 1,2,4; Exchange Assembly 2; Senior Play; Football 1; Basketball 1; Speech Festival 2,4; Popularity King 1.

JANICE HARKNESS

Mixed Chorus 1; Glee Club 4; Bible Club 1,2,3.



JOHN HARRINGTON

Basketball 1,2,3,4; Band 1,2,3,4; Class Officer 1,4; Track 3,4; Boy's State 3; Mixed Chorus 4; Music Festival 1,2,3,4; French Club 3.

JUNE HEWITT

Mixed Chorus 2; Glee Club 2; Bible Club 1,2,3,4; Senior Play; Pep Club 2; Music Festival 2.



MARCIA HILL

Cheerleader 3,4; Pep Club 1,2,3,4; Mixed Chorus 2; Glee Club 1,2,3,4; Dance Band 2,3,4; Junior Play; Senior Play; Student Council 3; Pow Wow Staff 4; Football Queen 4; Thespian 4; Girl's Quartet; Exchange Assembly 3,4; Music Festival 1,2,3,4; State Award 3; Honor Banquet 1,2,3.

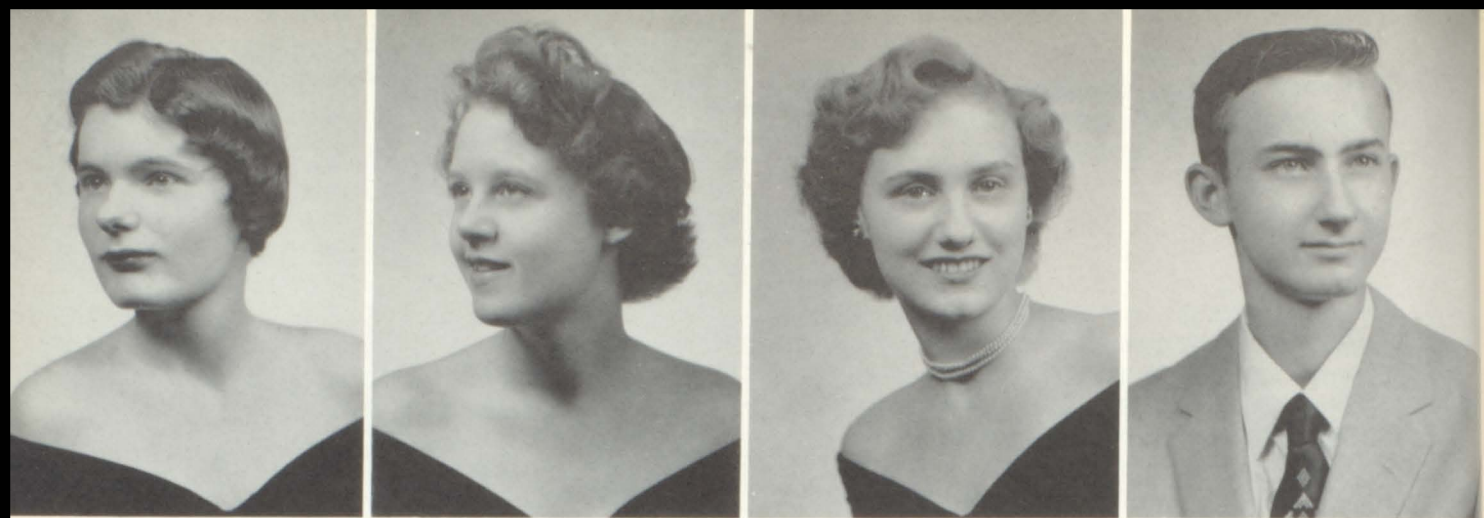
PAULINE HONEYWELL

Queen Attendant 4; Mixed Chorus 2,3; Glee Club 4; Pep Club 1,2.



DAN HOUSEWORTH

Carrollton, Missouri 1,2.

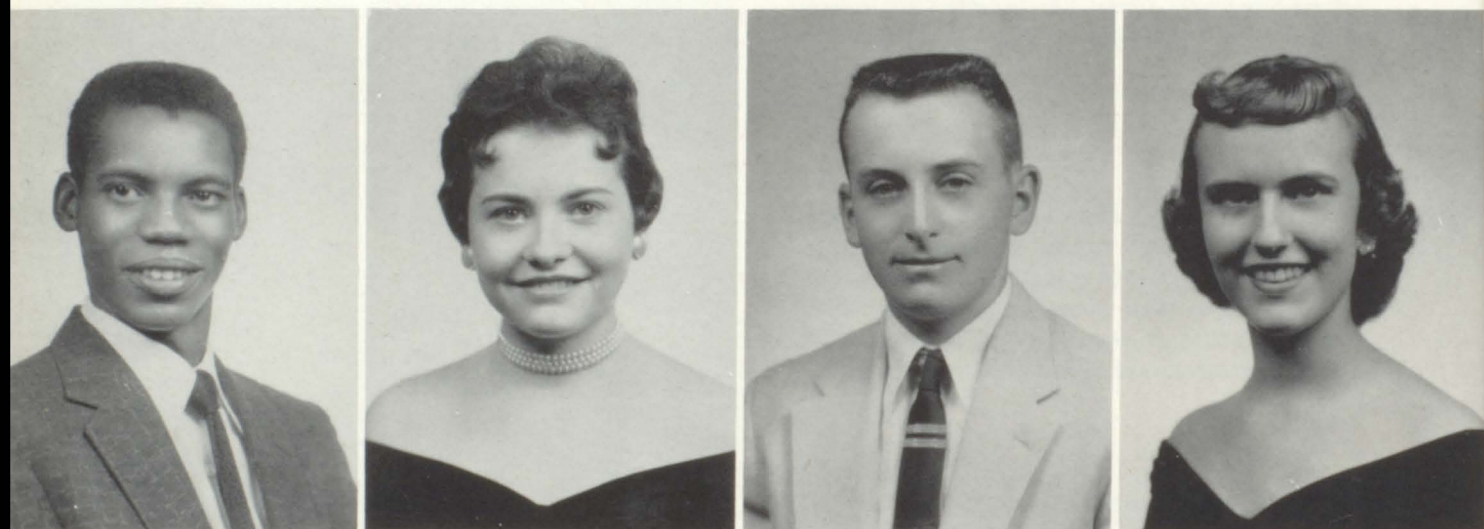


JUANITA HURD Band 1,2; Honor Banquet 1; Senior Play; Pep Club 1,2,4; Music Festival 1,2.

CAROL HUSEBY Paseo, Kansas City, Missouri 1,2; Mixed Chorus 4; Art Club 4.

LAVADA HYLTON Pow Wow Staff 4.

RONNIE ISSETT Senior Play; F.F.A. 1,2,3,4, Parliamentarian 4.



SAMUEL JOHNSON EL Mixed Chorus 4; Photo Club 3; Art Club 1,2; Track 1,2.

MARGARET KELLY Music Festival 1,2,4; Mixed Chorus 1,2; Glee Club 4; Exchange Play 2; Senior Play; Pep Club 4; F.F.A. Chapter Secretary.

TOM KELLY F.F.A. 1,2,3,4, Treasurer 3, President 4.

CONNIE KLAHR Mixed Chorus 1; Glee Club 4; Band 2,3,4; Honor Banquet 1,2,3; Pep Club 2,3,4; Latin Club 2,3,4; Music Festival District 2,3,4

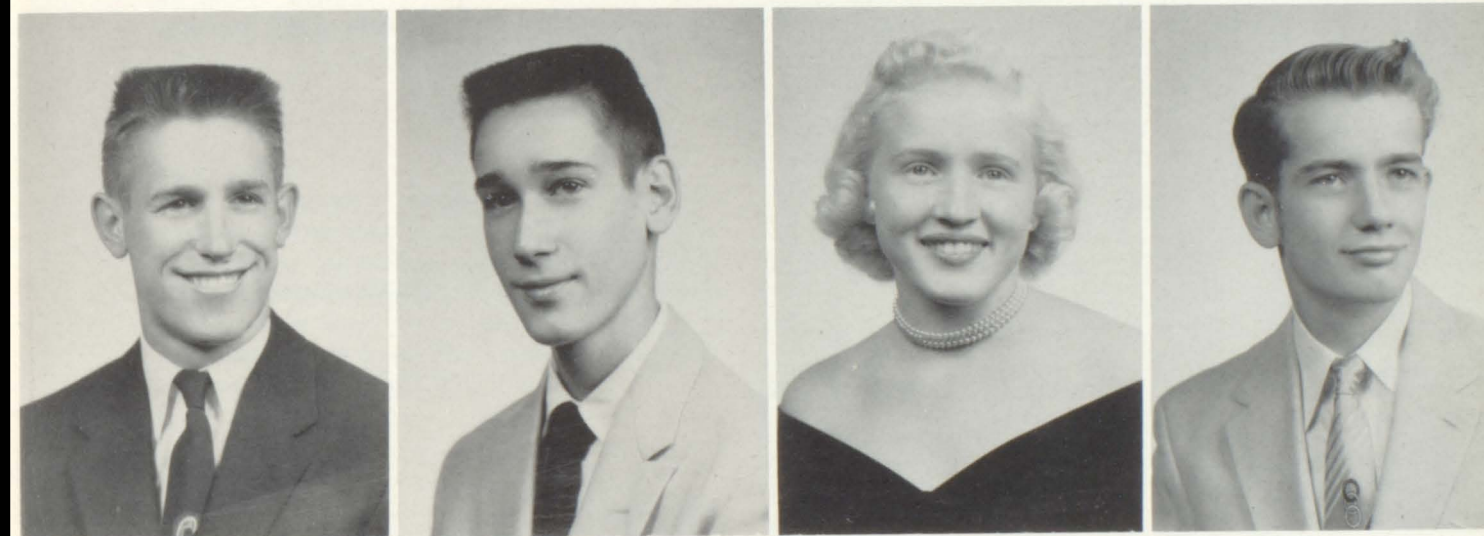


DENSIE LANGFORD Mixed Chorus 2; Bible Club 1, 2, 3; Music Festival 2; Student Librarian 2, 3.

BARBARA LATTIN Mixed Chorus 2; Band 1, 2, 3, 4; Honor Banquet 1, 2, 3; Class Secretary 3; Senior Play; Play Student Director 3; Student Council Secretary 4; Pep Club 1, 2, 3, 4, Treasurer 4; Pow Wow Editor 4; Girl's State 3; Music Festival 1, 2, 3, 4; District 3, 4; Spanish Club 3, 4, President 4; District Award 3, 4; Snow Ball Attendant 4; Thespian 4; Annual Staff 4.

ROY MC CALLOP Sumner, Kansas City, Kansas; Basketball 1; Bible Club 1.

LESTER MC CLEARY Senior Play; Football 1; Basketball 1, 2; Pow Wow Staff 4.

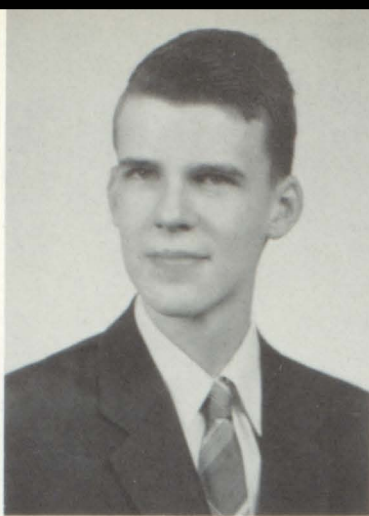


CARROL MARTIN Senior Play; Football 1, 2, 3, 4; Honorable Mention E.K.L. 3; Second Team E.K.L. 4; All Area, Co-Captain 4; Football King 4; Track 1, 2, 3, 4; B-Club 2, 3, 4, President 4.

JIM MARTIN Annual Staff 4; Photography.

ALICE MATTHEWS Mixed Chorus 2; Glee Club 4; Exchange Assembly 2; Honor Banquet 1, 2, 3; Class Officer 1, 4; Pep Club 1, 2, 3, 4, Secretary 4; Music Festival 2, 4; Speech Festival 2; Queen Attendant - Football and Basketball 2.

DAVID MILLER



LYNN MILLIKEN

Fairport, New York 1,2; Class Officer 4; Pep Club 3,4; Cheerleader 4; Junior Play; Senior Play; Thespian 4; Pow Wow Staff 4; Annual Staff 4; French Club 3,4; Quill and Scroll.

DON MILLS

Senior Play.



ROBERT NELSON

Class Officer 2,3; Junior Play; Football 3; Basketball 1,2,3,4; E.K.L. Honorable Mention 3; Track 2; Mixed Chorus 1; Debate 2; Student Council 2; Music Festival 2; Popularity Candidate 2.

MARCIA NORTH

Mixed Chorus 2,3; Glee Club 4; Band 2,3,4; Honor Banquet 1,2,3; Pep Club 1,2,3,4; Music Festival 2,3,4; State Music Award 3.

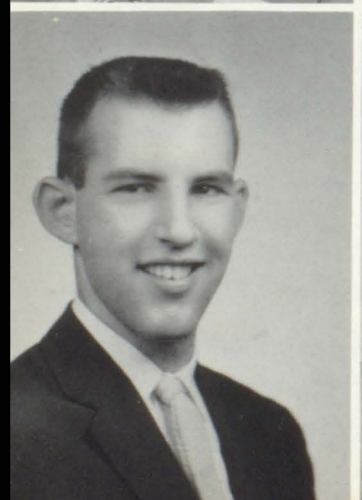


RAY OWENS

Football 1; Basketball 1,2,3,4.

SHIRLEY PICKETT

Photo Club 3; F.H.A. Parliamentarian 4.



SID PLATT

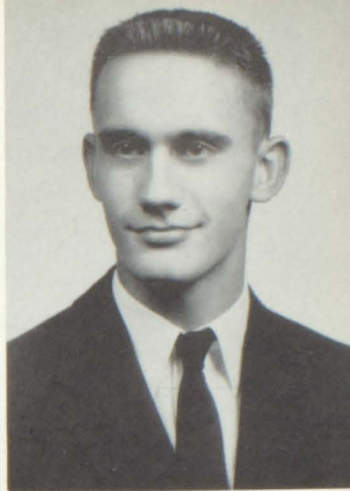
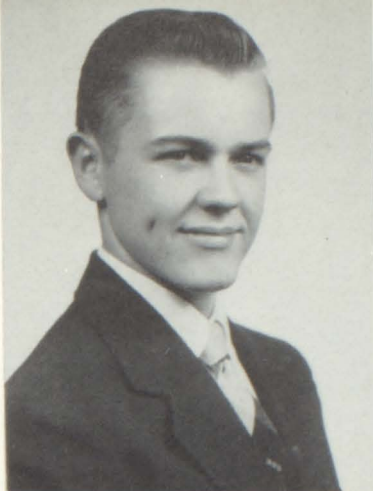
Junior Play; Football 1,2,3,4; Student Council 2; Debate 2; Boy's State 3.

MARVIN POLLOCK

Honor Banquet 1; Senior Play; Debate 2,3; Football 3,4; B-Club.

JOHN REYNOLDS

Speech Festival 1, 2; Debate 2, 3; Track 1, 2, 3, 4; Student Council 3, Vice-President 3.



ROBERT RHODES

Band 1, 2; Football 1, 2; Basketball 1, 2, 3, 4; Student Council 1; Debate 2; Music Festival 1, 2; Popularity Candidate 3.



MIKE ROHDE

Mixed Chorus 2, 4; Band 3, 4; Honor Banquet 2, 3; Basketball 2, 3, 4; Student Council 4; Music Festival 2, 4; Spanish Club 3.

BILL SCHULTZ

Mixed Chorus 1; F.F.A. 1, 2, 3, 4.



RICHARD SHAVER

Football 1, 2, 3; B-Club.

PAT SHELEY

Quill and Scroll; Thespian 3, 4, President 4; Exchange Assembly 3, 4; Honor Banquet 1, 3; Junior Play; Senior Play; Student Council 1; Pep Club 1, 2, 3, 4; Cheerleader 2, 3, 4; Debate 2, 3, 4; Pow Wow Staff 2, 3, 4; Annual Staff 4; Football Attendant 4; Popularity Candidate 2; Speech Festival 2, 3, 4; French Club 3, 4.

GEORGE SMITH

Bible Club 1, 2, 3, 4; Football 1, 2, 3; Basketball 1; Track 2, 3, 4.



DON SOUDERS

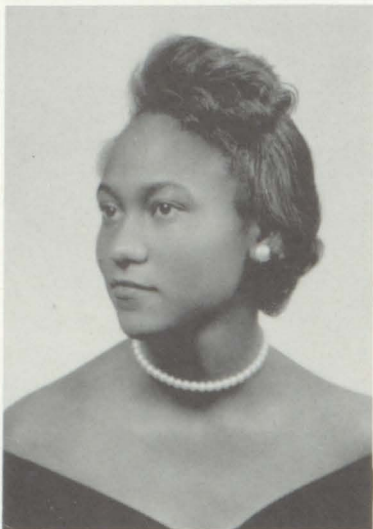
Mixed Chorus 4; F.F.A. 1, 2, 3, 4.



EDMOND SPARKS  
F.F.A. 2.

JOHN STARK

Band 2; Honor Banquet 1; Class Officer 1,4;  
Junior Play; Football 1,2; Basketball 1,2,3,4;  
Student Council 1,4; Debate 2; Music Festival  
2; Speech Festival 2,3; B-Club.



FRED THEDEN

Class Officer 2; F.F.A. 2; Football 1; Basket-  
ball 1, 2.

BETTY JANE THOMAS

Bible Club 1,2,3; Spanish Club 1,2,3; F.H.A.  
4; Mixed Chorus 1; Music Festival 1.



JAY TOMLIN

Photo Club 3; Debate 2, 3; Exchange Assembly 3;  
Band 2, 3, 4; Music Festival 2, 3, 4.

NAOMI TOOT

Photo Club 3; Pep Club 3,4; F.H.A. 4, Vice-  
President; Honor Banquet 1.



MARTIE TRAVIS

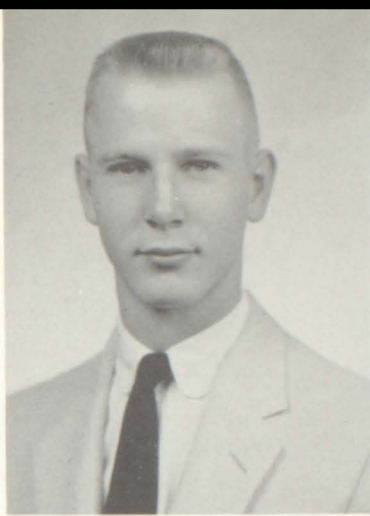
Latin Club 1,2,3,4; Spanish Club 3,4; Pep Club  
1,2,3,4; Exchange Assembly 3,4; Junior Play;  
Senior Play; Debate 4; Pow Wow Staff; Annual  
Staff 4; Mixed Chorus 2; Music Festival 2; Snow  
Ball Attendant 4.

RALPH VON FRIEDLY

Photo Club 3; French Club 3; Spanish 1, 2; Band  
1, 2, 3; Music Festival 1, 2, 3; Honor Banquet 3.



RONNIE WATKINS  
F.F.A. 1,2,3,4, Secretary 3,4.



ROY WEATHERMAN  
Washington, Bethel, Kansas 1,2.

LILLIE MARY WILLIS  
Washington, Bethel, Kansas 1; Lincoln, Kansas  
City, Missouri 2; Annual Staff 4.



CAROLYN WOOLF  
Mixed Chorus 1,2; Music Festival 1,2; Senior  
Play; Pep Club 1,2,3,4.

DOROTHY WOOLF  
Photo Club 3; Art Club 3; Pep Club 1,2; Honor  
Banquet 1.



JEANENE WRIGHT  
Glee Club 1,3,4; Band 1,2,3,4; Pep Band 1,2,  
3,4; Dance Band 2,3,4; Music Festival 1,2,3,  
4; District Contest 4; State Contest Clarinet So-  
lo 3; Pep Club 1,2,3,4; French Club 3,4; Latin  
Club 1,2,3,4; Honor Banquet 1,2,3.

DAVID YOUNT



EVELYN ZERBEST  
Mixed Chorus 2; Bible Club 1,2,3; Student Li-  
brarian 2; Music Festival 2.

NAME	KNOWN FOR	FUTURE PLANS	SHOULD BE
Earl Arnold	Chartreuse Taxi	(?)	Jet Pilot
Anna Askew	Back Rubs	Nurse	Po-Go Stick Artist
Errol Ballance	Skipping Classes	Barber	Professional Wrestler
Barbara Ballentine	Rock Collection	Marriage	"Pagent" Cover Girl
Malcolm Beaty "Tex"	Southern Drawl	Business	Texas Oilman
Larry Barnes	Loafing	Work	Mouse Trap Maker
Dorothy Berry	Love of Horses	Beauty Operator	Horse Trainer
Jeanette Bever	Perpetual Motion	Housewife	Ballet Dancer
Ardella Bolton	Woman of Song	Secretary	Torch Singer
Martha Branson	Prediciments	Teacher	Gossip Columnist
Walter Brauer	Woman Hater	College	Arab King
Paul Bush	Skipping School	Graduation Day	Weight Lifter
Lawrence Bushnell "Larry"	Taking Pictures	Photography	Movie Director
Glenn Clark	Speeches	Farming	Champion Wrestler
Mary Jo Cochran	Husky Voice	College	Concert Violinist
Marsha Cox	Admirers	Secretary	Orential Actress
Mary Lou Cunningham	Robbing the cradle	College	Singer at the Met
Jo Ann Dangerfield	Hot Piano Playing	Singing on Tour	Jazz Band Leader
Alvin Faunce	Half Pint	Farming	Business Executive
Richard Feleay "Dick"	Size 13's	Air Force	Crooner
Susan Fleming	Small Feet	Pharmacist	Woman Aviator
Jerold Fletcher	Touchdowns	Engineer	Olympic Track Star
George Gebhardt "Jerry"	Jimmy Dean Portraits	Naval Career	Calypso Singer
Janice Harkness	Giggles	Office Job	Dramatics Teacher
John Harrington	Ask Any Girl	Pre-Med	Personal Advisor
June Hewitt	Mixing Milk Shakes	Secretary	Hula Dancer

NAME	KNOWN FOR	FUTURE PLANS	SHOULD BE
Marcia Hill	Voice	College	Hair Dresser
Pauline Honeywell	Small Waist	Marriage	Model
Danny Houseworth	Teasing Girls	Navy	Disc Jockey
Juanita Hurd	Biting Legs	Nurse	Style Setter
Carol Huseby	Quiet Ways	Housewife	Music Director
Lavada Hylton	Cool Driving	Marriage	Chemist
Ronald Issett	Interesting Voice	Draftsman	Ventriloquist
Sammuel Johnson El	Hep Cat	College	Globe Trotter
Margaret Kelly	Hearty Laugh	Business School	Tango Teacher
Thomas Kelly "Tom"	Hidden Charms	Farmer	Band Leader
Connie Klahr	Secret Loves	Occupational Therapy	Socialite
Densie Langford	Diamond Earrings	Job	A Poet
Barbara Lattin	Slumber Parties	College	Dog Catcher
Roy McCallop	Clothes	College	"Grant's" Manager
Lester McCleary	Heart Breaker	Undecided	Drill Sargeant
Carrol Martin	Pause That Refreshes	Barber College	Super Man
James Martin "Jim"	Wine, Women and Song	Armed Forces	Safari Leader
David Miller	Side Burns	Nothing	Hot Rod Driver
Linda Milliken "Lynn"	Waffles	F.B.I. Agent	Comediene
Don Mills	Sly Ways	Watson Drug Store	Gangster
Robert Nelson "Bob"	George Gobel "Gab"	College	Butler
Marcia North	Horse Sense	College	Rodeo Steer Roper
Ray Owens	Eating Cigars	Make Money	Radio Announcer
Shirley Pickett	Selling Pop Corn	Foster Mother	Gum Tester
Sidney Platt "Sid"	Mechanical Wizard	Electrical Engineer	Sound Effects Man

NAME	KNOWN FOR	FUTURE PLANS	SHOULD BE
Marvin Pollock	Jokes	Chemical Engineer	Santa Clause
John Reynolds	Late Hours	Lawyer	Play Boy
Robert Rhodes "Bob"	Sun Tan	College	Jail Bird
Michael Rohde "Mike"	Impish Grin	Jet Pilot	Private Eye
William Schultz "Bill"	Mysterious Silence	Trade School	Fuller Brush Man
Richard Shaver	Muscles	College	Tight Rope Walker
Patricia Sheley "Pat"	Spirit Bottle	College	Champion Channel Swimmer
George Smith	Eyelashes	Minister	'Pro' Football Player
Don Souders	Souders Strut	Las Vegas Bound	Horse Trader
Edmund Sparks	Freckles	Navy	Research Chemist
John Stark	Long Legs	College	Artic Explorer
Fred Theden	Daring Dates	Electrical Engineer	Material Expert
Betty Thomas	Silly Sayings	Dietician	News Correspondent
John Tomlin "Jay"	Man of Many Names	Chemist	Mad Scientist
Naomi Toot	Mathematical Mind	College	Math Wizard
Martha Travis "Martie"	The Moocher	College	Advertising Colleges
Ralph Von Friedley	California Caper	Undecided	Termite Inspector
Ronald Watkins	Ham Operator	College	Dr. of Flea Circus
Roy Weatherman	Jolly Ways	Marriage	Shop Operator
Lillie Willis	Speedy Typing	Secretary	Quiz Show Contestant
Carolyn Woolf	"An Apple A Day"	College	Trapeze Artist
Dorothy Woolf	Painting Ways	College	Art Critic
Jeanene Wright	Temper	College	Lonely Hearts Consultant
David Yount	Early Morning Blues	College	Orator
Evelyn Zerbest	Curly Locks	Secretary	Gym Teacher

# JUNIORS

## CLASS OFFICERS

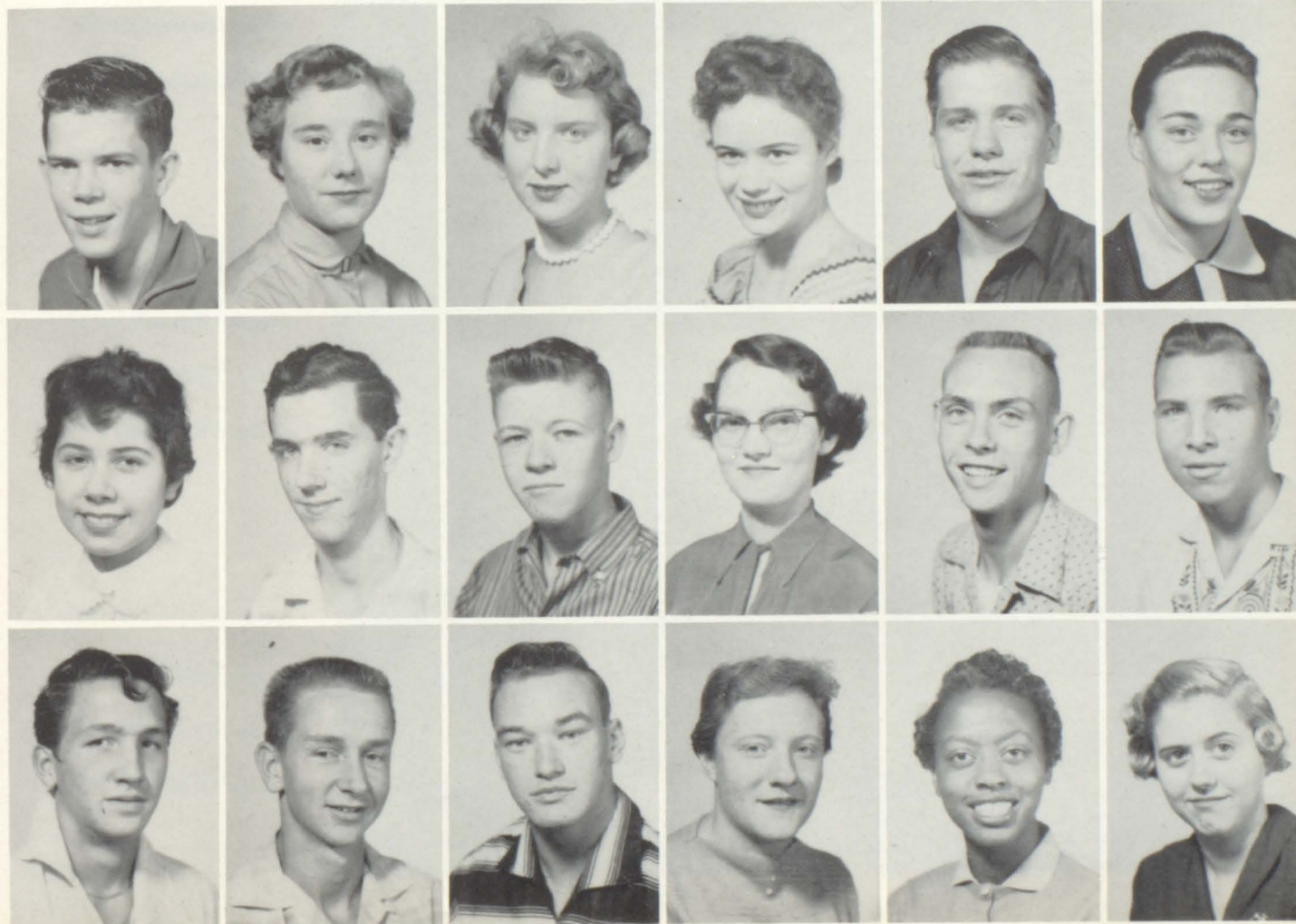
President: John Swenton  
 Treasurer: Richard Powell  
 Secretary: Kathleen Barb  
 Vice-President: Gerry Saunders

## CLASS SPONSORS

Miss Barnes  
 Miss Toburen  
 Miss Carlson  
 Mr. Thompson



FIRST ROW: Walter Adkins, Ola Anderson, Carol Backstrom, Kathleen Barb, Gary Barney, and Shirley Beach. SECOND ROW: Delores Blancarte, Bob Boyce, Richard Brauer, Oleva Brogdon, George Brown, and Irvin Brunson. THIRD ROW: Lonnie Cannon, Russell Clark, Jack Cline, Marge Coiner, Alice Crosby, and Mickey Curran.





Mickey Curran  
 Mickey Dale  
 Joyce Delana  
 Sherman Deonier



Relna Dickson  
 George Dingey  
 Tina Dunkin  
 Morris Elliott



Frank Emery  
 Mary Espy  
 Forrest Evans  
 Harold Faunce



Diane Forester  
 Frances Foster  
 Patty Glynn  
 Richard Goodseal



Roger Groh  
 Ronnie Hale  
 Billie Jo Hedden  
 Jimmy Hemphill

Clyde Herrin  
 Muriel Hoffine  
 Judy Hymer  
 Sandra Hynds



Royce Kahle  
 Linda Klahr  
 Marilyn Klamm  
 Betty Lawrence



Barbara Lewis  
 Shirley Linden  
 Alice McCleary  
 William McDonald



Patti McLaughlin  
 Constance McNealy  
 Larry Malone  
 Martha Meinke

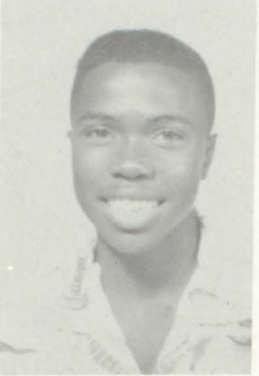
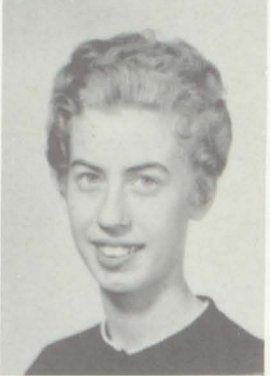


Carolyn Miller  
 Larry Milliken  
 Jim Milner  
 Maudie Murphy





Catherine Neal  
 Retha Nichols  
 Deanna Padgett  
 Margaret Pilger



Donald Pogue  
 Martha Pollock  
 Judy Reynolds  
 Sam Rosenthal



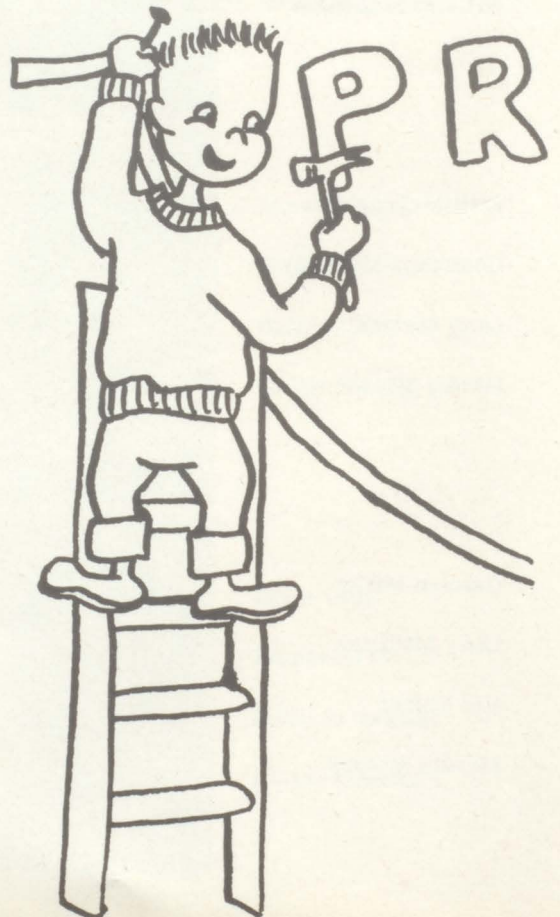
Kay Roudybush  
 Carol Ruby  
 Mary Ruby



Gerry Saunders  
 Gayle Schrader



Ronnie Seaton  
 Judy Shanafelt





Elaine Smith

Ted Smith

Ellis Sowers

Fred Stroud



Hurshel Surritte

John Swenton

Roy Vinyard

Mary Jo Walker



Junior Wall

Daryl Wheeler

John White



Louise Williams

Alice Wilson

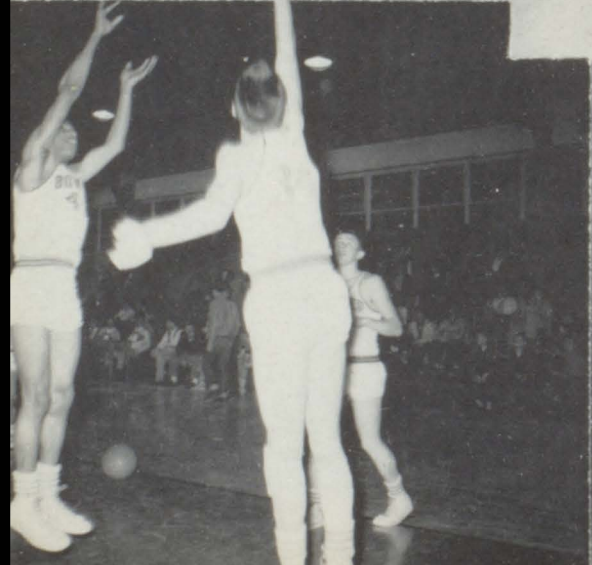
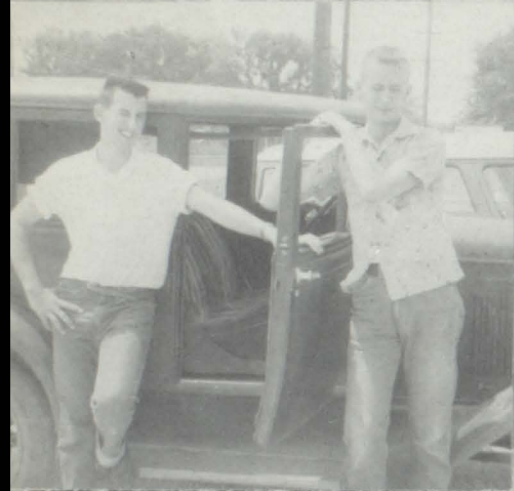


Betty Wilson



OM







TREASURER: Bob Frey  
 PRESIDENT: Shirley Bush  
 VICE-PRESIDENT: George Wendt  
 SECRETARY: Mary Hauetter

SOPHOMORE CLASS SPONSORS

Mrs. Stith  
 Mr. Hilbert  
 Miss Lee  
 Mr. Kimbrough

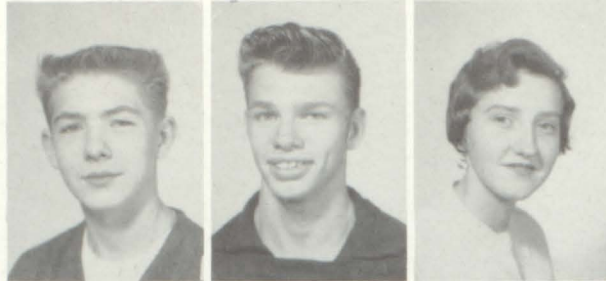


# SOPHOMORES

TOP ROW: Lennis Adair. SECOND ROW: Horace Askew, Jasper Ballance, Pat Beach, Marshia Beard, Alan Boyd, Dona Brauer. THIRD ROW: Ava Nell Brogdon, Donna Brooks, Phylis Brunson, Carol Bundy, Shirley Bush, Barbara Byers.



**SOPHOMORES**



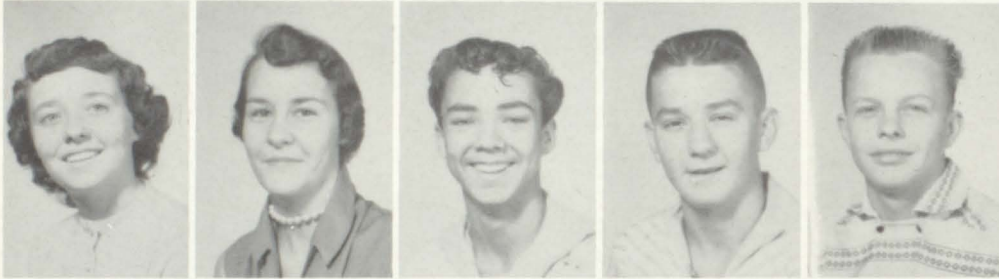
Jim Carr  
Tom Chamberlain  
Beverly Chance



Dwight Chance  
Linda Chandley  
Connie Clapper  
Sandra Clayton  
Loretta Conway



Barbara Dangerfield  
Jack De Motte  
Carol Deonier  
Mitzi Dunn  
Clydeen Edmonds



Helen Everman  
Susie Feilback  
Bob Felix  
Larry Forback  
Alva Freeman



Bob Frey  
Gerald Garstecki  
Bernice Gilbert  
Gerry Glynn  
Larry Goble

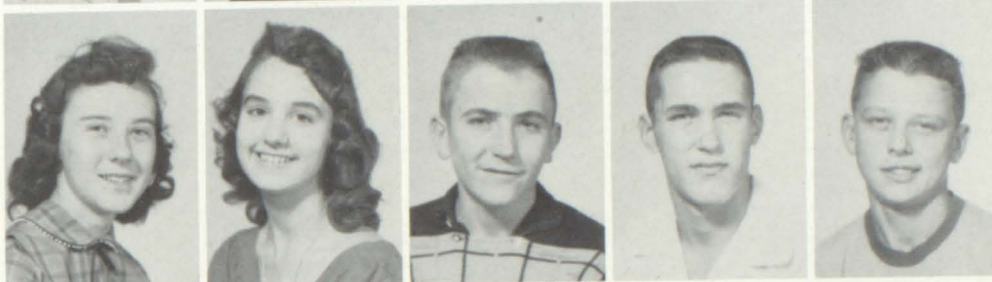


Stan Goble  
Donald Hanes  
Alma Harrell  
Earnest Harris  
Mary Ann Hartegan

Mary Hauetter  
Linda Hemphill  
Jerry Hodges



Shirley Holloway  
Roberta Huseby  
Gaylord Jones  
Lanny Jones  
Carl Killingsworth



Martha Kuhn  
Pat Langford  
Clanton Laverack  
Gene Leighty  
Joyce Leonard



Eugene Lynn  
Grace McDonald  
Melba McMackin  
Midge Martin  
Betsy Metzler



Kathleen Mikesich  
Evelyn Mitchell  
Dick Montgomery  
Alan Nash  
Vivian Neal



Grady Newton  
Luella Newton  
Carol North  
Larry Oliver  
Diane Orser





Lee Penny  
Sandra Peoples



Larry Platt  
Laura Purtee  
Donna Renner  
Ray Reynolds  
Jim Reynolds



Mike Reynolds  
Carolyn Roberts  
Ed Roberts  
Vickie Roweth  
Virginia Shaw



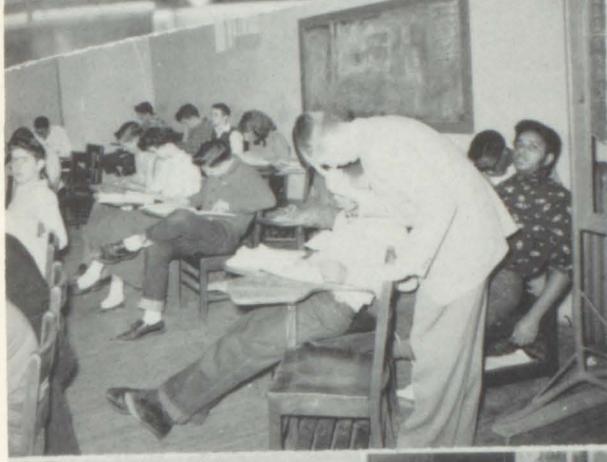
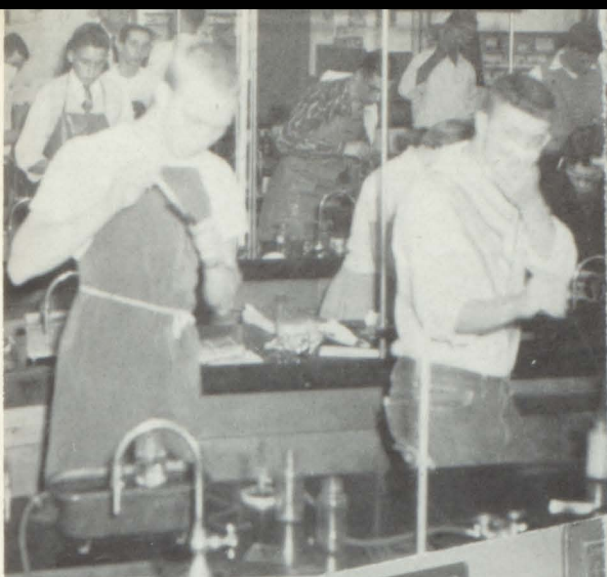
Ronnie Shultz  
Gary Slick  
Patty Stolfus  
Carole Taylor  
Gary Vaughn



Joan Vaughn  
Bob Vickers  
George Wendt  
John J. White  
Julia Wilkerson



Cristella Williams  
Sharon Worley  
Judy Young  
Gay Yount  
Sharon Zimmerman



# FRESHMEN



PRESIDENT, Rudy Kellner  
 TREASURER, Sharon Merritt  
 VICE-PRESIDENT, Torie Travis  
 SECRETARY, Pat Jennings

FIRST ROW  
 Larry Acock  
 Bertha Akers  
 Janice Bamard  
 Judy Bateman  
 Grover Bates

SECOND ROW  
 Kenneth Beach  
 Gary Bender  
 Lloyd Berry  
 Sharon Bowker  
 Richard Brooks  
 Roberta Bryant

THIRD ROW  
 Lee Carl  
 Charlotte Chamberlain  
 Larry Chamberlain  
 Toby Chamberlain  
 Virginia Champlain  
 Loretta Clouse

FRESHMEN CLASS SPONSORS  
 Mr. Tewell  
 Miss Gorton  
 Mr. Venturella  
 Mrs. Zumbrunn





Sharon Coleman  
 Darling Connor  
 Dorothy Crosby  
 Mary Cuddy  
 Pat Deay



Paul DeGroot  
 Lawrence Delana  
 Nadine DeMaranville  
 Harrell Dotson  
 Leland Eastwood



Karen Einhellig



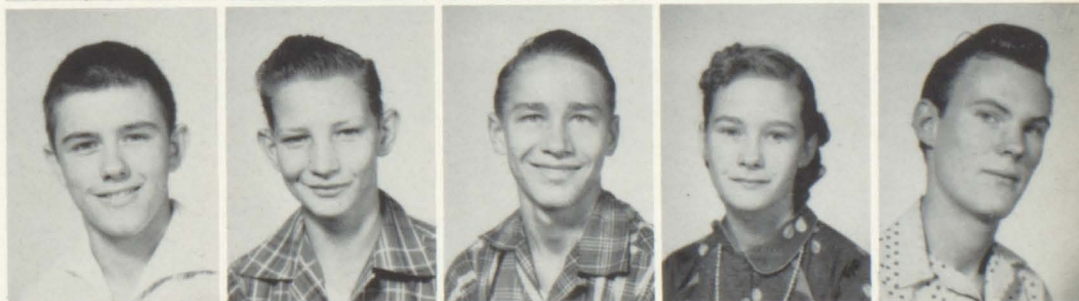
James Faunce  
 Margaret Fenton  
 Pat Finnigin  
 Carol Fish  
 Darlene Freeman

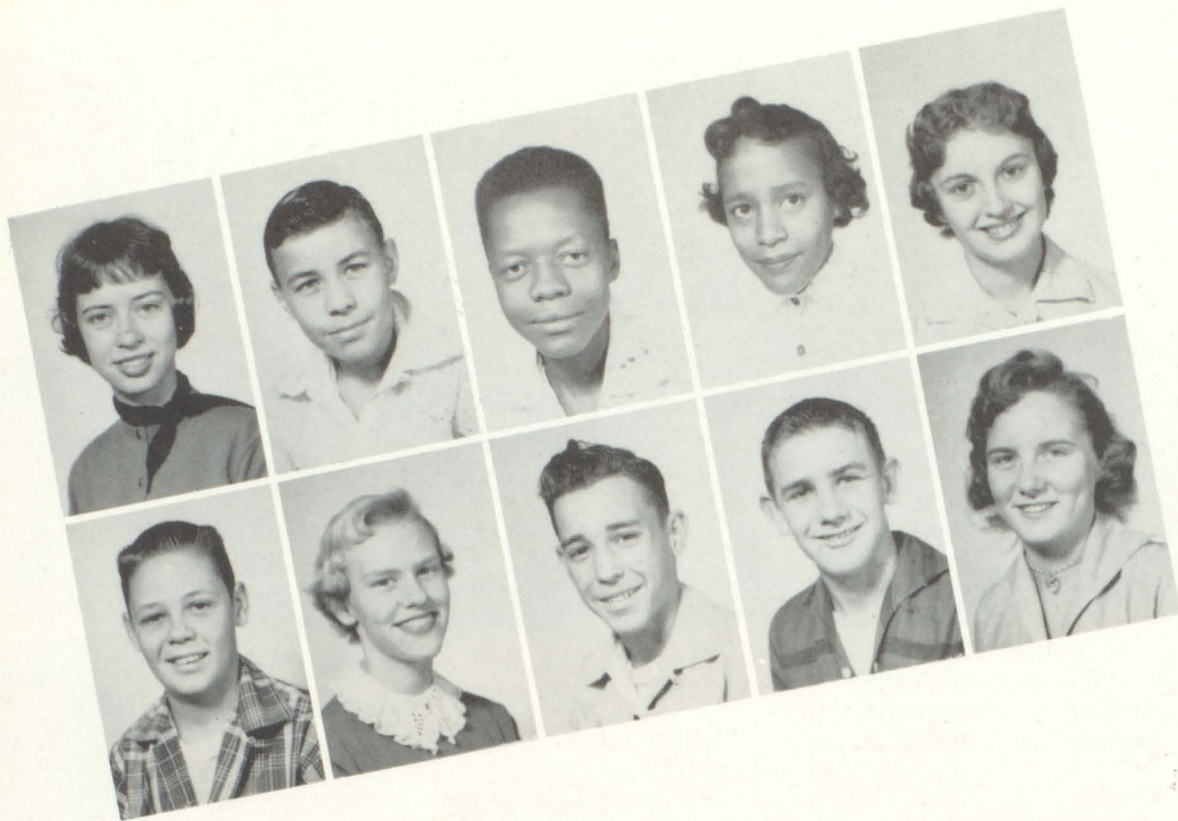


Phyllis Garstecki  
 Donna Gibson  
 Roy Goble  
 Charles Hale  
 Johnny Hanes



Bill Harlan  
 Jimmy Harris  
 Bill Hewitt  
 Judy Hubbard  
 Pat Hurd





FIRST ROW: Pat Jennings, Donald Johnson, Menelike Johnson El, Carolyn Jones, and Karen Keen. SECOND ROW: Rudy Kellner, Lavonne Klahr, Harold Klamm, Alvin Knight, and Peggy Langford.



Gary Laster  
Sharon Lawrence  
Edward Lynn  
Donald McAnerney  
Gwen McCallop



Walter McCaslin  
Beverly McDowell  
Mary Ann Meade  
David Meinke  
Sharon Merritt



Mike Metzler  
Timmie Mitchell  
Darlene Mize  
Dorotha Moss  
George Murray



FIRST ROW: Robert Neal, Daniel Nelson, Sterling Newton, Frank Orser, and JoAnn Perryman. SECOND ROW: Juanita Pickett, George Pollock, Dennis Powell, Glen Price, and Richard Pruitt.

Janice Rehm  
Mary Lou Reynolds  
Scott Rohde  
John Richard  
Ray Ritchie

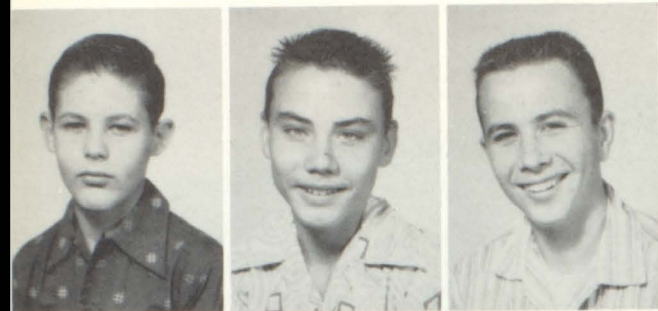


Joyce Ruby  
Susan Saunders  
Jane Saunders  
Mike Schrader  
Barbara Scott



Rudy Scott  
Bill Sedgwick  
Ronnie Shirley  
Charles Spring  
LaVern Stean





Zerl Strode  
John Sullivan  
Bill Tabor



Willis Thomas  
Torie Travis  
Sandra Trumble



Don Vickers  
Lloyd Vinyard  
Myrna Wagner



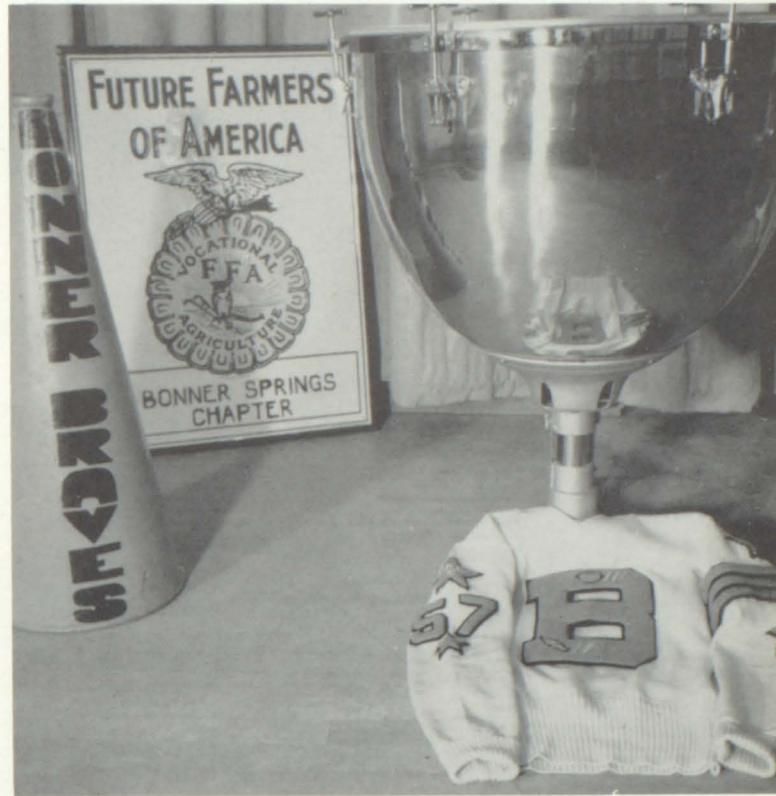
Carol Watkins  
Warren Watkinson  
Janice Watts



Carol Wendt  
Sally Wilkerson  
Larry Wistrom



Mike Woolf  
Barbara Wright  
John Zaring

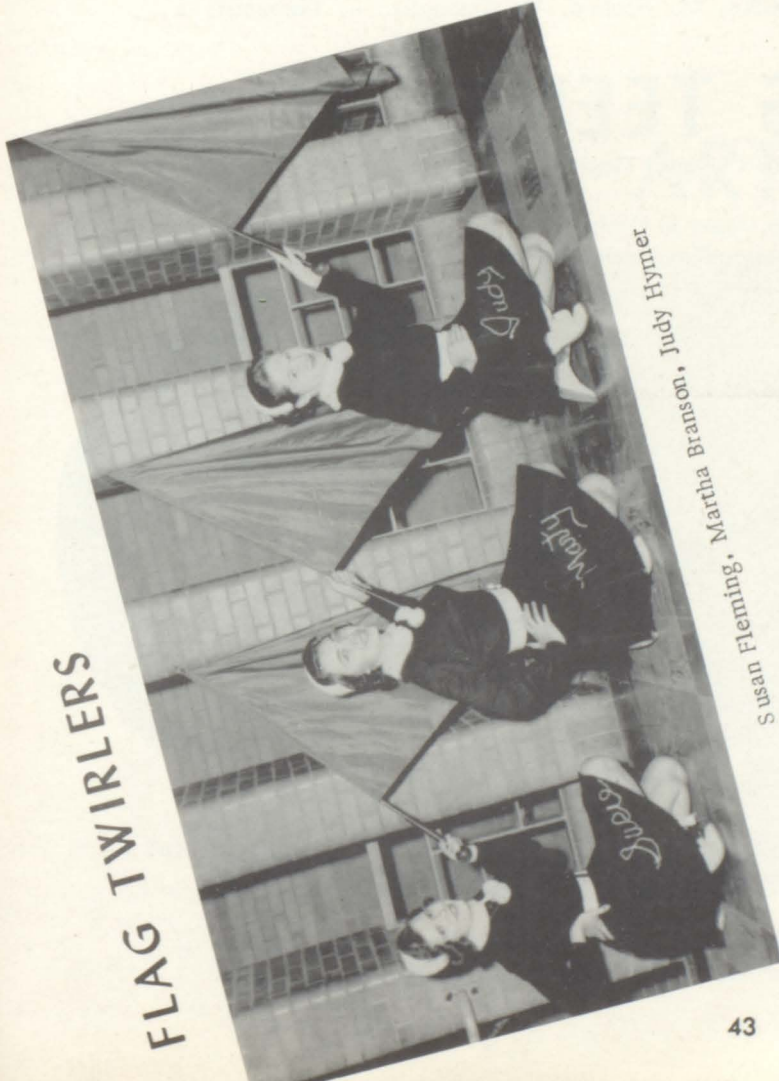


# ORGANIZATIONS



**BAND**

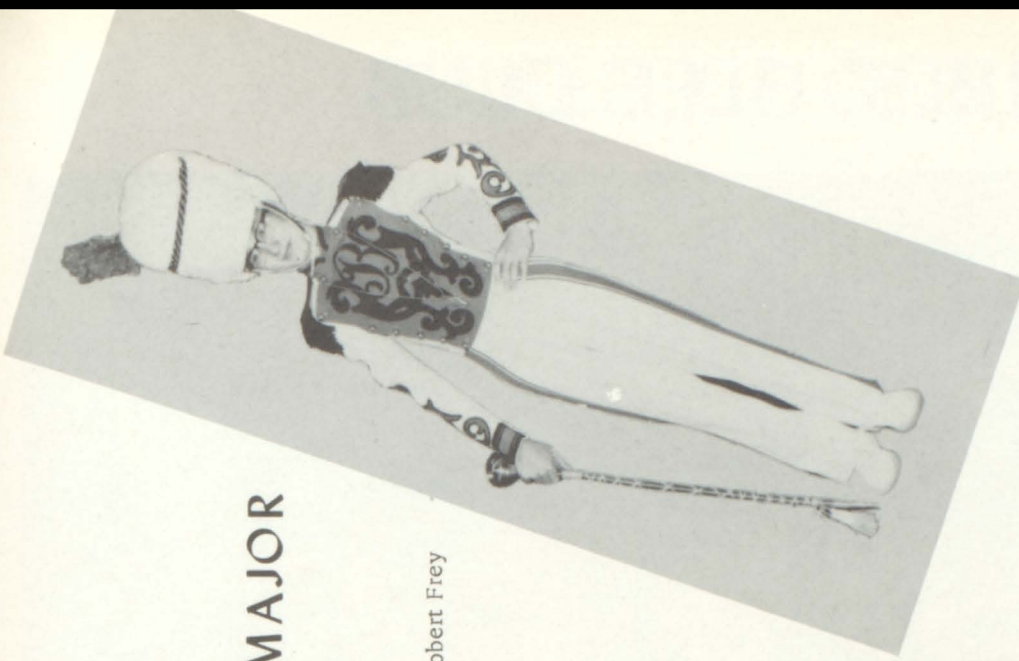
# FLAG TWIRLERS



Susan Fleming, Martha Branson, Judy Hymet

# DRUM MAJOR

Robert Frey



# MAJORETTES



Betty Lawrence  
Judy Shanafelt  
Elaine Smith  
Mary Cuddy

# GIRLS' GLEE CLUB



FIRST ROW: M. North, J. Wright, J. Harkness, M. Cochran, A. Matthews, D. Berry, P. Honeywell, M. Hill, M. Kelly. SECOND ROW: D. Connor, M. Pollock, O. Anderson, K. Roudybush, D. Padgett, J. Reynolds, M. Meinke, B. Lawrence, T. Dunkin, J. Shanafelt, S. Coleman. THIRD ROW: L. Penny, L. Conway, S. Peoples, P. Beach, D. Brauer, C. Clapper, S. Worley, S. Zimmerman, C. Edmonds, H. Everman, B. Dangerfield. FOURTH ROW: S. Lawrence, S. Merritt, J. Pickett, B. Scott, M. Beard, M. Hartegan, M. Dunn, M. Kuhn, M. Hoffine, V. Champlin, L. Hemphill, A. Harrell.

## SWING TEENS

A Girl's Quartet Singing Barber Shop Harmony

Basso, Mary Jo Cochran  
Baritone, Kay Roudybush

Lead, Marcia Hill  
Tenor, Mary Ann Hartegan



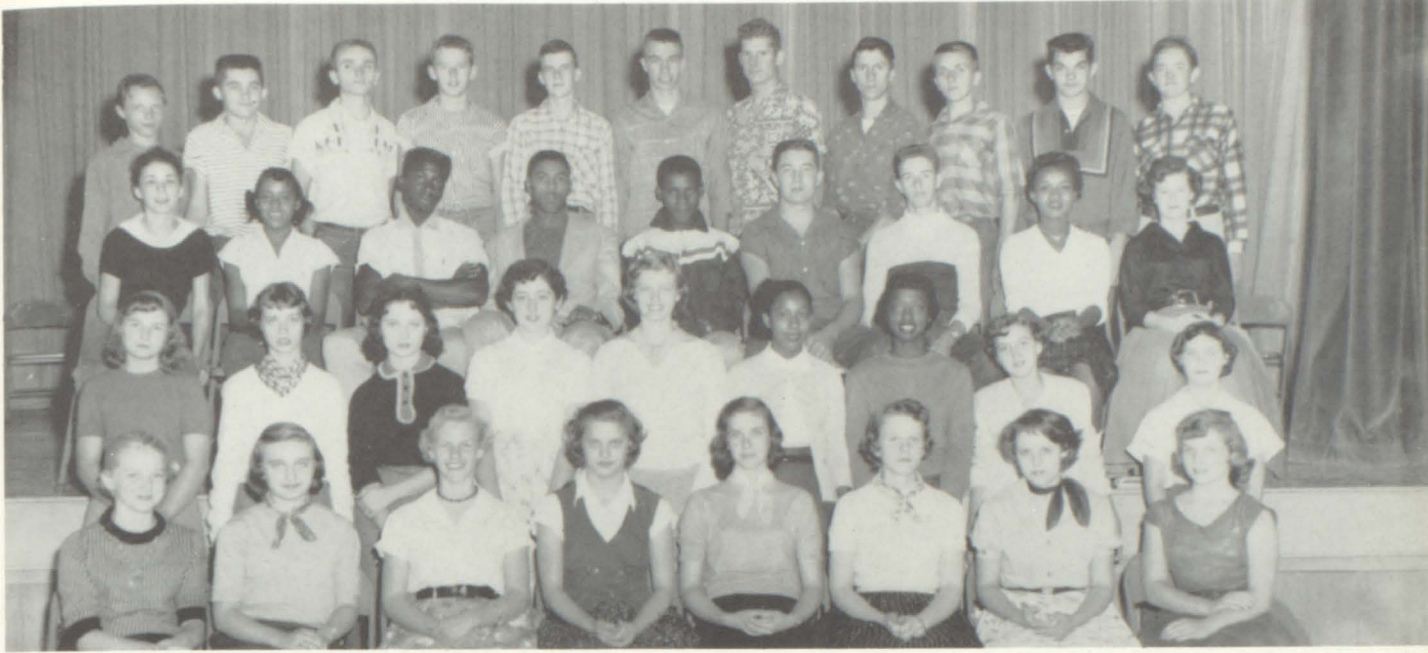
Jack Boring's TV Talent Round-Up.



Singing "A Garden in the Rain" at the 'Snow Ball'.



# MIXED CHORUS



FIRST ROW: M. Ruby, C. Bundy, L. Klahr, N. DeMaranville, J. Watts, P. McLaughlin, C. Huseby, M. Cuddy. SECOND ROW: J. Perryman, P. Jennings, B. Ballentine, P. Finnigan, S. Worley, L. Williams, A. Crosby, B. Chance, P. Brunson. THIRD ROW: J. Bateman, C. Jones, L. Crosby, J. Fletcher, S. Johnson, A. Boyd, L. Barnes, J. Dangerfield, G. Schrader. FOURTH ROW: J. Faunce, S. Goble, M. Rohde, R. Montgomery, D. Mills, M. Reynolds, R. Feleay, D. Souders, S. Rohde, G. Vaughn, J. Ritchie.

# ART CLUB



THE ART CLUB, advised by Mr. Galvin, is busy in the early stages of painting a mural for Bonner Springs High School depicting the various antics of the famous Bonner BRAVES.

# FRENCH CLUB



FIRST ROW: L. Conway, L. Penny, C. Jones, C. North, S. Merrit, L. Klahr, S. Bowker. SECOND ROW: J. Wright, C. Ruby, M. Dunn, K. Roudybush, D. Padgett, J. Saunders, B. McDowell. BACK ROW: S. Fleming, P. Sheley, G. Saunders, L. Adkins, B. Boyce, L. Bushnell, D. Pogue, J. White, S. Feilbach, G. McCallop, Miss Lee.

# SPANISH CLUB



FRONT ROW: J. Curran, M. Cunningham, M. Travis, G. Yount. SECOND ROW: C. Neal, F. Foster, S. Holloway, S. Clayton, L. Chandly. THIRD ROW: V. Roweth, B. Metzler, M. Martin, P. Langford. BACK ROW: L. Jones, G. Slick, B. Felix, B. Lattin, W. Brauer, M. Branson, J. Young, Miss Lee.

# LATIN CLUB



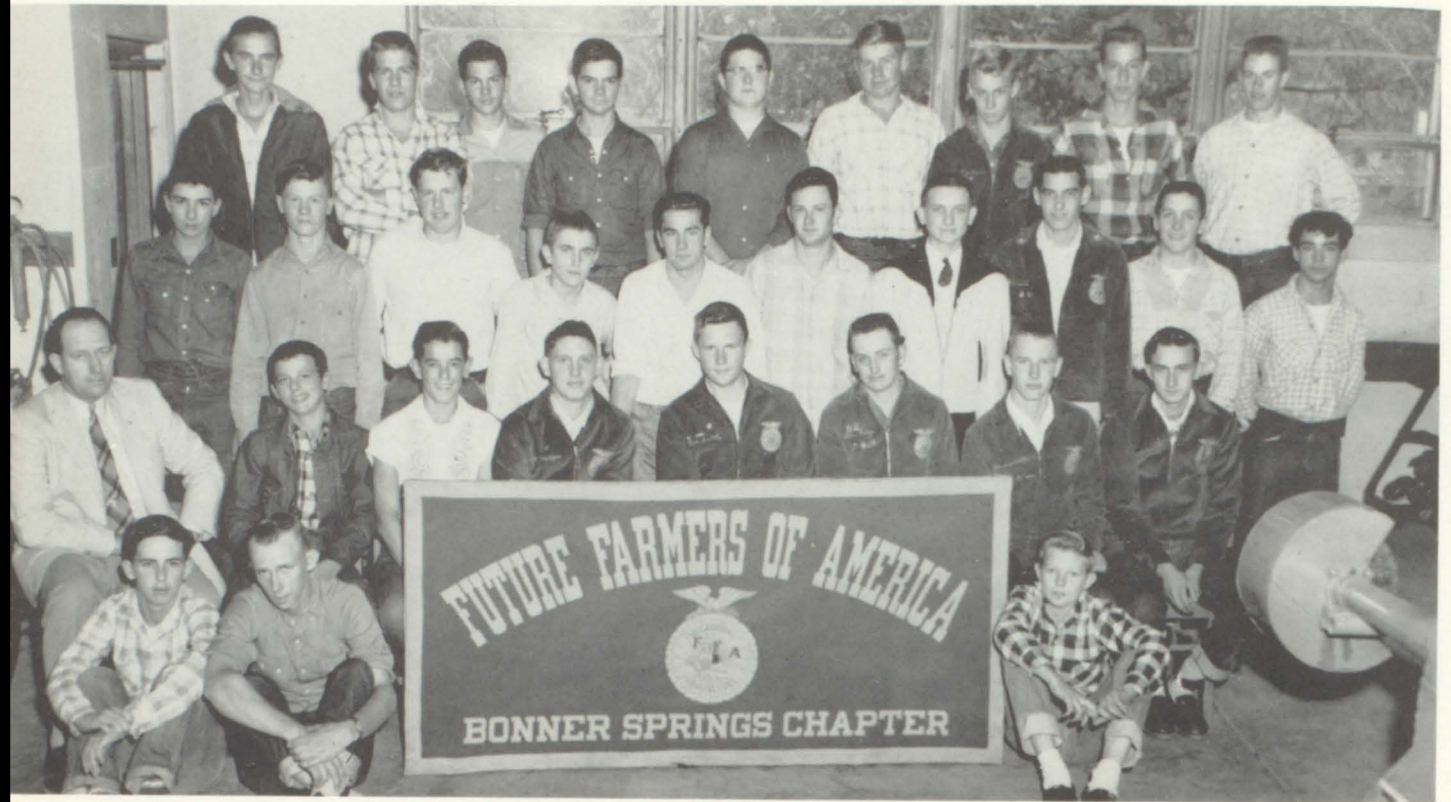
FIRST ROW: C. Chamberlain, C. Edmonds, S. Bush, M. Travis, C. Klahr, S. Fleming, J. Wright, C. Ruby, Mrs. Stith, Sponsor. SECOND ROW: D. Gibson, J. Wilkerson, S. Saunders, O. Brogdon, L. Klahr, S. Coleman, B. Scott, C. Watkins, M. Watkins. THIRD ROW: M. Meinke, J. Reynolds, L. Platt, C. Herrin, C. Hale, H. Hundley, D. Powell, G. Price, A. Askew. FOURTH ROW: E. Roberts, B. Frey, R. Powell, G. Saunders, D. Meinke, S. Rosenthal, J. Swenton.

# BIBLE CLUB



FIRST ROW: A. Wilson, J. Hewitt, B. Wilson, C. Bundy, S. Bush, M. Meinke, R. Nichols, R. Dickson, H. Everman. SECOND ROW: J. Curran, C. Edmonds, B. Byers, L. Clouse, M. L. Reynolds, T. Dunkin, D. Orser, C. Jones, S. Linden. THIRD ROW: L. Barnes, R. Hale, M. Curran, G. Barney, G. Smith, L. Wistrom, D. Meinke, G. Bender, B. Hewitt, D. Johnson, L. Delana, G. Pollock.

# FUTURE FARMERS of AMERICA



TOP ROW: J. Richard, G. Barney, D. Vickers, B. Vickers, R. Pruitt, G. Garstecki, G. Glynn, R. Hale, L. Barnes. SECOND ROW: C. Spring, C. Laverack, L. Oliver, G. Jones, M. Curran, M. Elliott, G. Wendt, E. Arnold, D. Meinke, B. Felix. THIRD ROW: Mr. Van Petten, C. Killingsworth, L. Goble, G. Hodges, T. Smith, T. Kelly, R. Watkins, R. Issett. SITTING: G. Pollock, R. Neal, M. Schrader.

THE BONNER SPRINGS CHAPTER OFFICERS at Right Are, FRONT ROW: Royce Kahle, Tom Kelly, Glenn Clark. BACK ROW: Ronnie Issett, Ted Smith, Ronnie Watkins, and Mickey Dale,

The chapter does a lot of Television and speech work along with practical training in butchering, raising pigs and chicks, mechanics and metal work.



# FUTURE HOMEMAKERS of AMERICA



FRONT ROW: B. Gilbert, M. Dunn, S. Merritt, R. Dickson, M. Hoffine, P. McLaughlin, N. Toot, S. Pickett, M. Coiner, M. Espy. SECOND ROW: S. Holloway, D. Renner, S. Worley, S. Peoples, P. Finnigan, P. Beach, C. Edmonds, C. Watkins, J. Delana, L. Purtee. BACK ROW: Miss Carlson, S. Coleman, P. Deay, S. Clayton, B. McDowell, B. Chance, P. Langford, D. Brauer, M. Klamm, A. Brogdon, A. Wilson, O. Brogdon, S. Wilkerson, B. Byers, Miss Toburen, E. Smith, S. Beach.

## F. H. A. OFFICERS



Reporter, Mitzi Dunn; Parliamentarian, Shirley Pickett; Vice-President, Naomi Toot; President, Patti McLaughlin; Secretary, Muriel Hoffine; Treasurer, Relna Dickson; Song Leader, Sharon Merritt; Historian, Carolyn Roberts. STANDING: Sponsors, Miss Carlson and Miss Toburen.

# The Pow Wow



STANDING: Martie Travis, Les McCleary, Jerry Gebhardt, Susan Fleming, Kathleen Barb, Mary Jo Cochran, Pat Sheley. SEATED: Marcia Hill, Lynn Milliken, Gerry Saunders, Barbara Lattin, Walter Brauer, Martha Branson.

Mr. Craig, Advisor

Publishing a weekly mimeographed paper and the school yearbook, student journalists could enroll in a regular class for the first time this year. An automatic Roneo mimeograph was purchased by the school for the sole purpose of publishing THE POW WOW.

Some firsts accomplished this year were an eight page paper, photographs and color ink. Students had to gather facts, write stories, copy read, type stencils, draw headlines, and operate the machine. For their use, the class rented two typewriters.



# STUDENT COUNCIL



President, Walt Brauer. STANDING: Ed Roberts, Frank Emery, John Stark, Mike Rohde, Ruby Kellner. SITTING: Mitzi Dunn, Sharon Merritt, Carol Ruby, John Swenton, Shirley Bush, Barbara Lattin.

The Student Council started the year by attending a Student Council conference held in Lawrence.

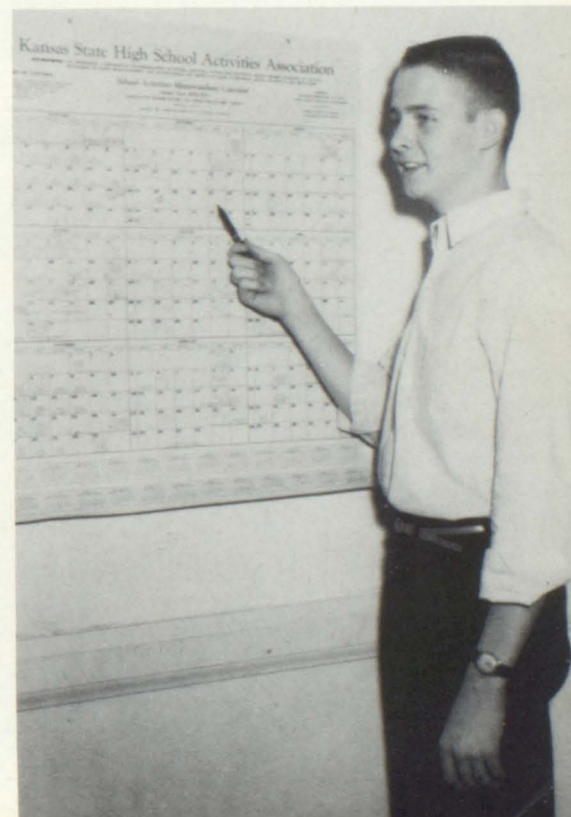
The Purpose of the Student Council is to carry out projects to aid the school and also many community campaigns such as the March of Dimes.

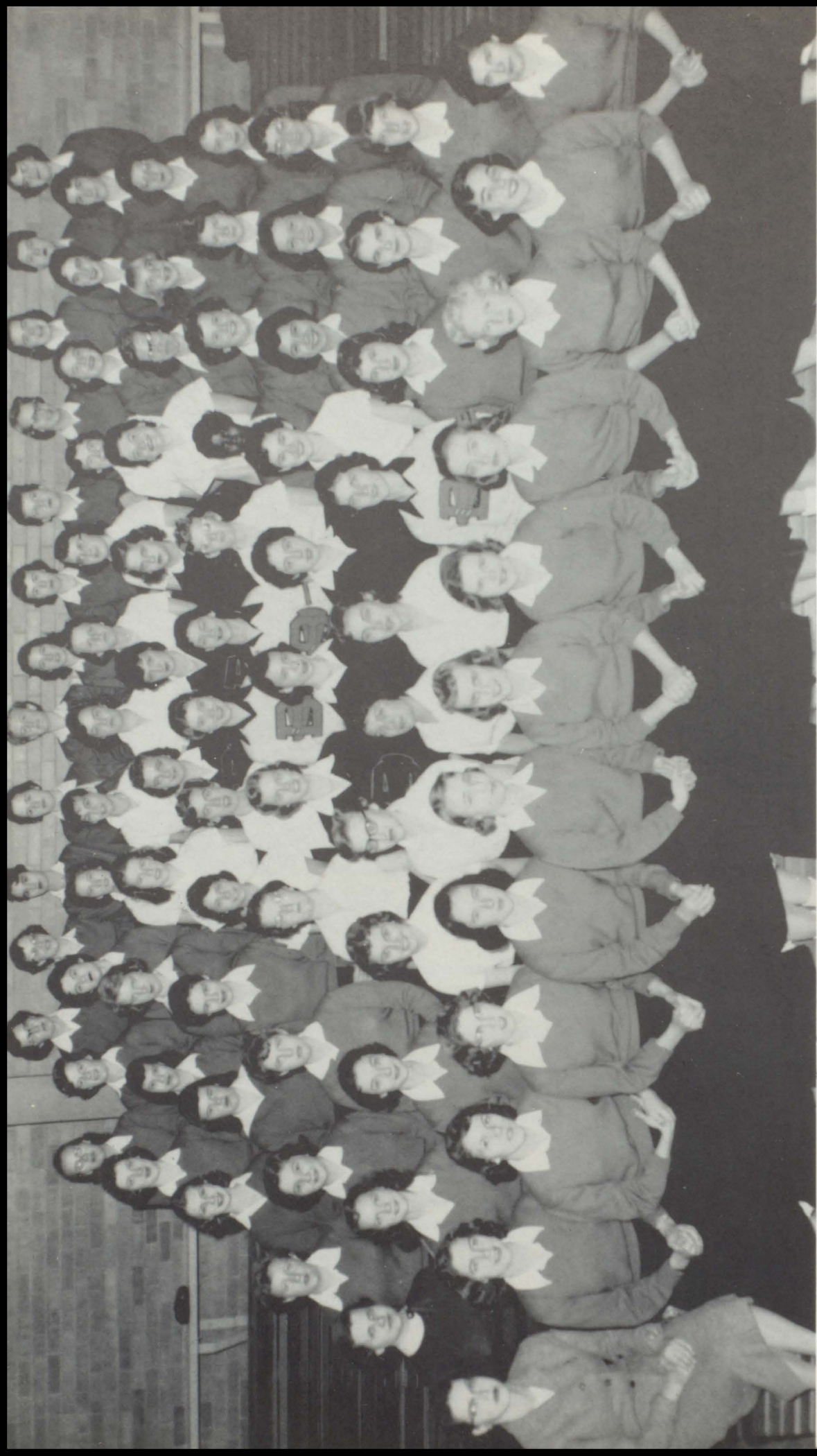
One of the Student Council's major responsibilities is supervising all of the school's social functions. Homecoming was the biggest social event of the year sponsored by the Student Council. Clean-up campaigns, saving stamp programs, special Christmas and Easter assemblies, Christmas baskets and a variety show were among the Council's other accomplishments.

A new juke box was also purchased for use during noon time and the many mixers and dances held in the Old Gym.

The Student Council has been very useful under the guidance of Mr. Fred Snyder.

STUDENT COUNCIL PRESIDENT WALT BRAUER





PEP CLUB



Lynn Milliken  
 Marcia Hill  
 Pat Sheley  
 Mary Jo Cochran  
 Deanna Padgett



Carol Bundy  
 Donna Brauer  
 Sharon Worley  
 Betsy Metzler  
 Nadine DeMaranville

Alice Matthews, Martha Branson, Barbara Lattin,  
 Judy Hymer, Mary Espy.



# BONNER B- CLUB



Roger Groh  
 Carrol Martin  
 Frank Emery  
 Morris Elliott  
 Richard Shaver  
 Ellis Sowers  
 Tom Chamberlain  
 Sid Platt

John Harrington  
 Larry Milliken  
 Mike Reynolds  
 Bob Nelson  
 Bob Rhodes  
 John Stark  
 Mike Rohde  
 William McDonald

John Reynolds  
 Jerry Gebhardt  
 Marvin Pollock  
 Mike Woolf  
 Richard Pruitt  
 Lanny Jones  
 Gerry Glynn  
 Gerald Garstecki

Daryl Wheeler  
 Jerold Fletcher  
 Richard Goodseal  
 Larry Malone  
 Dick Feleay  
 Gary Barney  
 George Smith

At this date there are 31 members but not counting all of the basketball or track lettermen. Coach Vaughn Kimbrough is this year's B-Club sponsor.





# ATHLETICS



FRONT ROW: Coach Kimbrough, Mickey Curran, Sid Platt, Roger Groh, Jerold Fletcher, Carrol Martin, Morris Elliott, Gary Barney, Coach Gorsky. SECOND ROW: Tom Chamberlain, Gerald Garstecki, Dick Feleay, Daryl Wheeler, Larry Malone, Ellis Sowers, Marvin Pollock, Lanny Jones, Bill McDonald. THIRD ROW: Mike Woolf, Richard Pruitt, Larry Platt, Larry Goble, Gerry Glynn, Roy Goble, Gaylord Jones, Bill Harlan, Frank Emery. FOURTH ROW: Coach Tewell, Toby Chamberlain, Scott Rohde, Bill Tabor, Clanton Laverack, David Meinke, Leland Eastwood, Allan Boyd, Donald Hanes, Ed Lynn.

Under Coach Kimbrough the varsity Braves ended their 1956 grid season with a 2-7 record. The Braves placed 5th in the East Kansas League this year with only four Seniors on the squad.

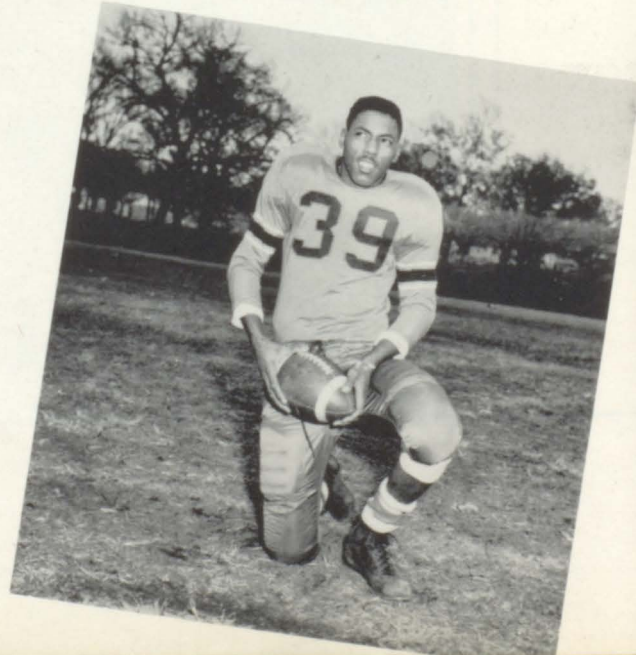
The B-team played only five games, winning one, tying one, and losing three. The Freshmen lost the only game they played.

Carrol Martin



CO-CAPTAINS

Jerold Fletcher





End: William McDonald



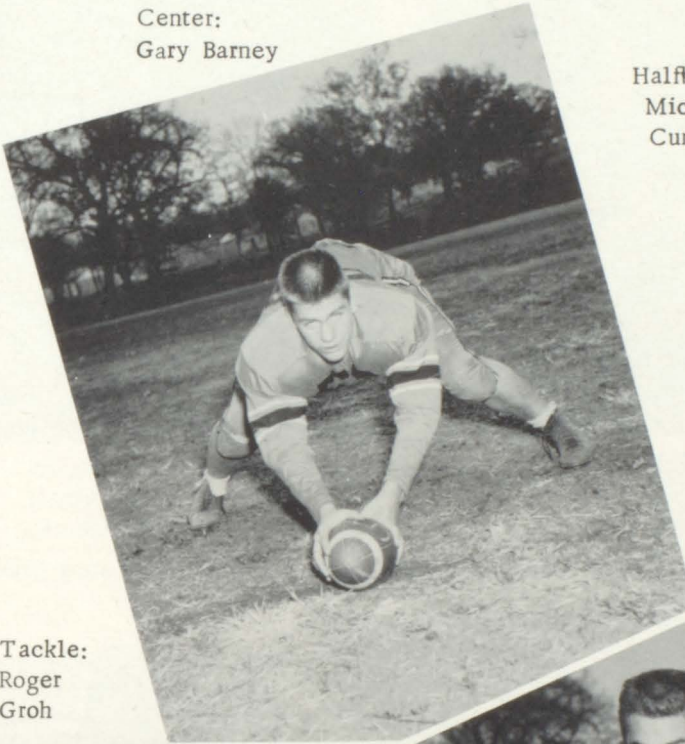
Tackle: Morris Elliott



Fullback: Daryl Wheeler

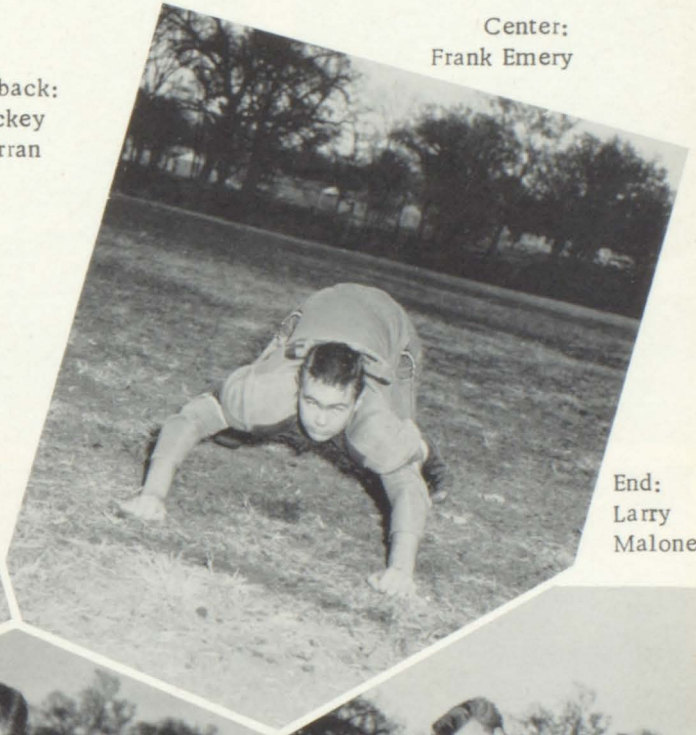
Center:  
Gary Barney

Center:  
Frank Emery

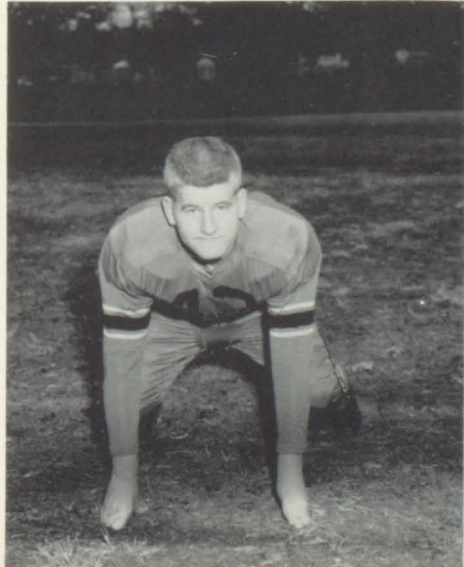


Tackle:  
Roger  
Groh

Halfback:  
Mickey  
Curran



End:  
Larry  
Malone



# BRAVES 1956 SCORES

Bonner	0	Tonganoxie	53
Bonner	19	St. Agnes	13
Bonner	0	Rosedale	53
Bonner	7	Paola	19
Bonner	14	Turner	34
Bonner	14	Osawatomie	0
Bonner	7	Seaman	46
Bonner	7	Olathe	19
Bonner	7	De Soto	46



Fullback: Dick Fealey



Guard: Marvin Pollock

Tackle: Sid Platt

Tackle: Gerald Garstecki



Guard: Richard Pruitt

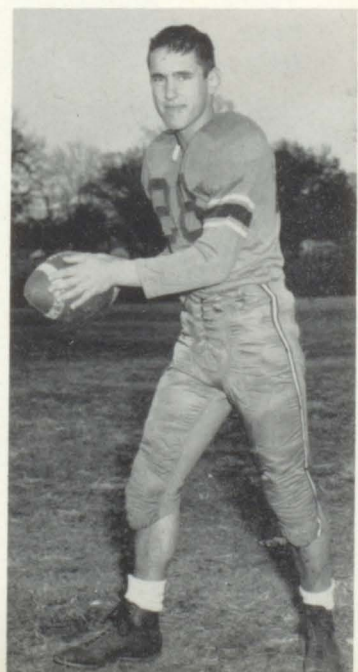
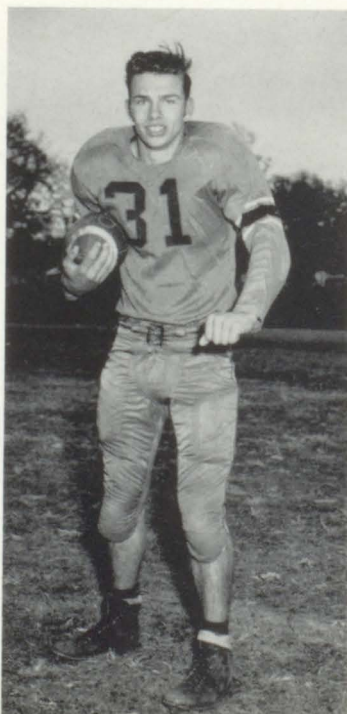


Guard: Gerry Glynn

Halfback: Mike Wolf

End: Tom Chamberlain

Quarterback: Lanny Jones



# VARSITY BASKETBALL SQUAD



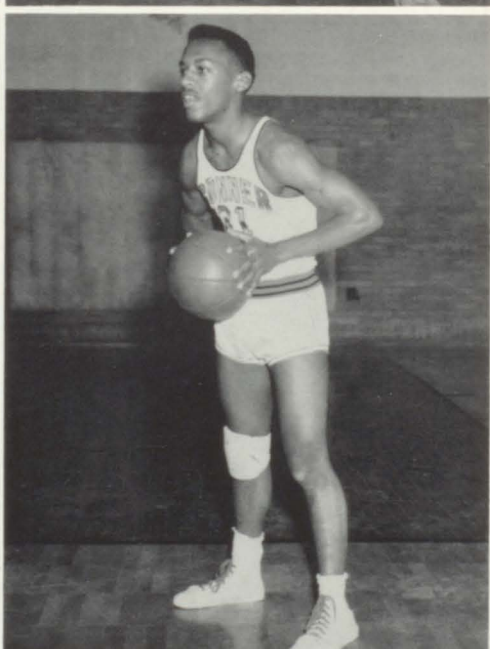
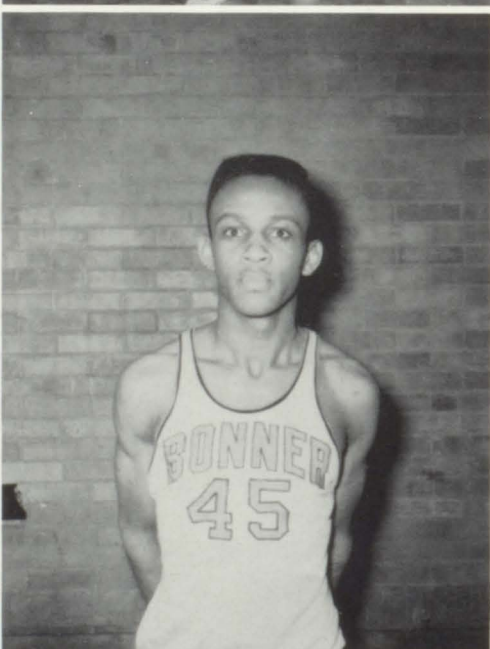
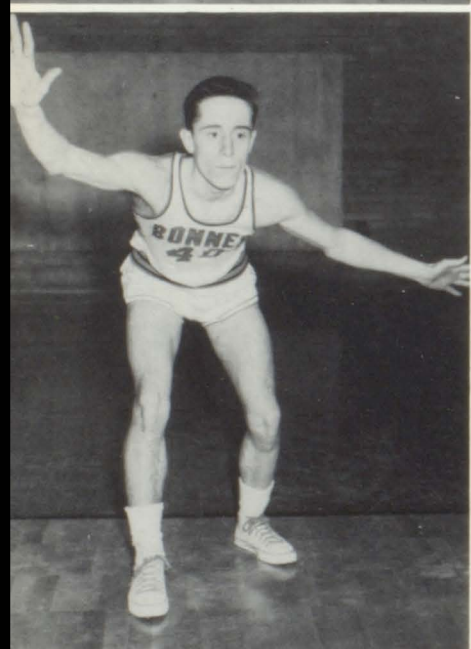
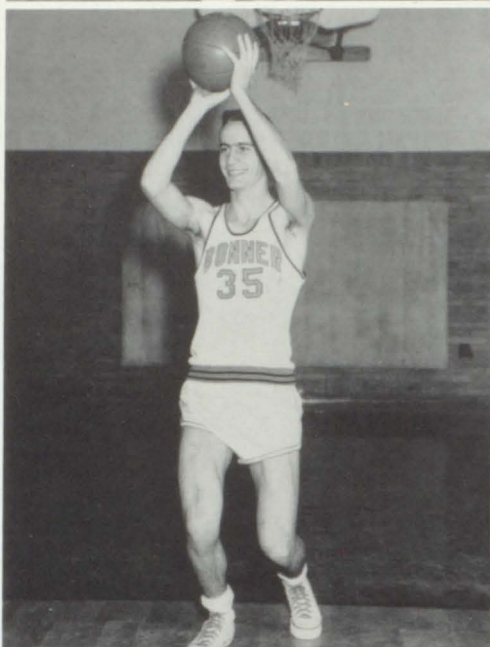
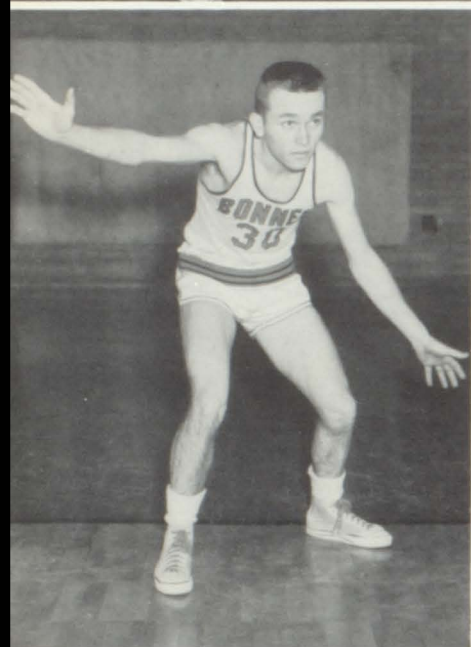
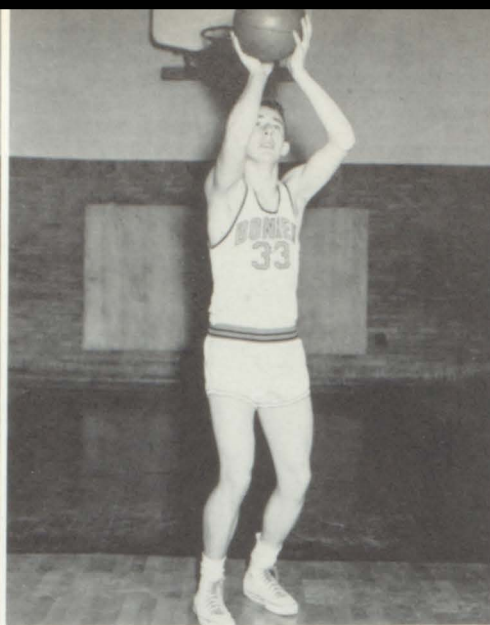
FRONT ROW: Mike Rohde, Larry Milliken, Bob Nelson, Mike Reynolds, Bill McDonald. BACK ROW: Alvin Knight, Bob Rhodes, John Stark, John Harrington, Mike Woolf, and Coach Ed Gorsky. ABSENT: Richard Goodseal.

The 1957 Bonner Braves ended their regular season with a 7-11 record, placing 4th in the East Kansas League. Beating Immaculata and losing to Haskell in the finals they took second in the District Tournament held there.

Coaches Kenny Tewell, Ed Gorsky, Vaughn Kimbrough, and Fred Snyder.

Bonner		Opponents
62	Springhill	64
75	St. Agnes	39
74	Baldwin	57
97	Paola	54
65	Olathe	70
66	DeSoto	58
36	Rosedale	54
40	Osawatomie	43
50	Immaculata	55
50	Turner	59
70	Paola	66
67	Olathe	82
56	St. Agnes	58
53	Rosedale	61
71	Osawatomie	57
60	Turner	66
86	Paola	76
53	Olathe	82

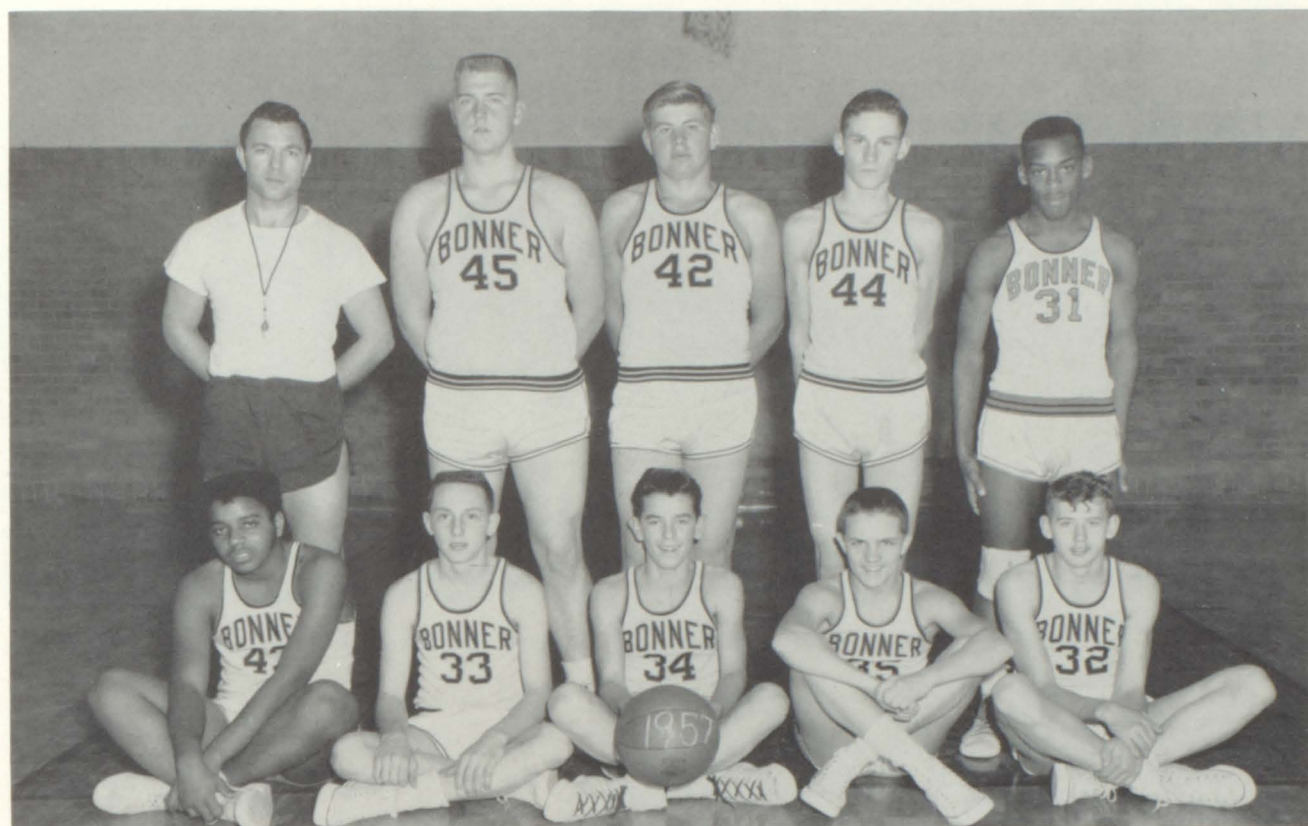




TOP ROW: John Stark, Center; Bob Nelson, Guard; Mike Reynolds, Guard. SECOND ROW: Mike Rohde, Guard; Bob Rhodes, Forward; John Harrington, Forward. THIRD ROW: Larry Milliken, Guard; Richard Goodseal, Center; Bill McDonald, Guard.



# "B" TEAM BASKETBALL



Coach Kimbrough, Ellis Sowers, Gerald Garstecki, Mickey Dale, Bill McDonald. Lonny Harris, Ed Roberts, Larry Goble, Gary Slick, Dick Montgomery. ABSENT: Sam Rosenthal, Errol Ballance.

The B-Team won 10 and lost 6 games.

# FRESHMEN BASKETBALL



Coach Tewell, David Meinke, Dennis Powell, Richard Powell, Richard Pruitt, Mike Woolf, Ed Lynn, Charles Hale. FRONT ROW: George Murray, George Pollock, Kenny Beach, Alvin Knight, Scott Rohde, Harold Klamm, Rudy Kellner.

The Frosh won 6 and lost 5 games and tied for 2nd place in the league.

# CROSS COUNTRY HARRIERS



Bob Boyce, Gary Slick, George Gebhardt, Larry Milliken, Jim Reynolds, John Reynolds.

# TRACK AND FIELD SQUAD



FIRST ROW: Tom Chamberlain, Mike Reynolds, John Reynolds, George Gabhardt, Larry Milliken, Carrol Martin, Morris Elliott. SECOND ROW: Lanny Jones, Jerold Fletcher, Ellis Sowers, John Harrington, Jim Reynolds, Bob Boyce, Gary Slick. THIRD ROW: Gary Barney, Ed Roberts, Scott Rohde, Larry Barnes, George Brown, Lonny Harris, Mike Rohde, Harold Klamm, Larry Bushnell. FOURTH ROW: Menelike Johnson El, Frank Emery, Mike Wolf, Alvin Knight, Horace Askew, Larry Platt. FIFTH ROW: John White, Kenny Beach, John Hanes, Jasper Ballance, Rudy Kellner.



# ACTIVITIES



HOMECOMING  
QUEEN  
AND  
ATTENDANTS



Carol Ruby, Junior Class.



Pauline Honeywell, B-Club.



Pat Jennings, Freshman Class.

On opposite page: Marcia Hill, Senior Class Homecoming Queen.

Pat Sheley, Pep Club.

Carolyn Roberts, Sophomore Class.

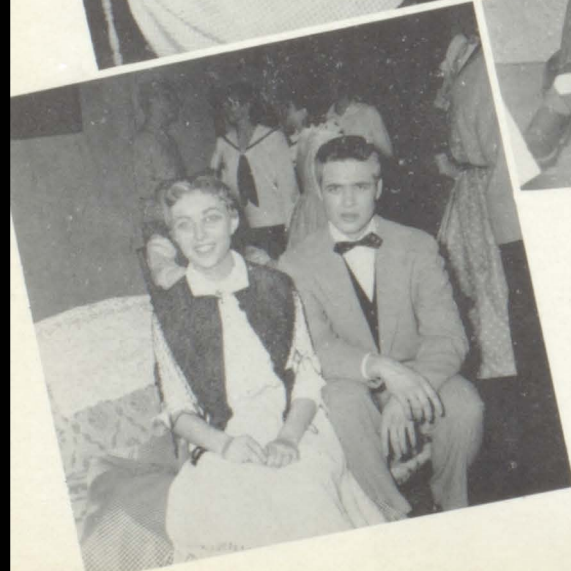


# "MEET ME IN ST. LOUIS"

"Meet Me In St. Louis" was presented by members of the senior class on two nights with two different casts.

More profit was made from this production than has ever before been made on such an event.

The casts were directed by Mr. Russell Craig.



# OUR YEARBOOK BOOSTERS

Apollo Cleaners

Hughes Service Station

Bonner Springs Lumber Company

Bonner Springs Paint and Wallpaper

Ben Franklin

Brewer's Supermarket

Burdette Jewelry

Chieftain

Commercial State Bank

Conoco Service Station

Dari-Dine

Dr. Ernest W. Mitts M. D.

Dr. Glen Bradbury D. O.

Dr. Kenneth L. May M.D.

Dr. W. D. Miller D.D.S.

Dr. O. G. Rhodes D. C.

Federated

Frey Auto Sales

Harry and Betty's Rose Room

Iris Buy-Way Food

Jones IGA

Krispy Cafe

Lone Star Cement Corporation

Long's Cafe

Marshall Auto

Manzo's Grocery

McHenry's Grocery

Minnie's Beauty Nook

Modern Craftsman

Owl Hardware

Ruby's Laundry

Stu's Market

Tinder's Market

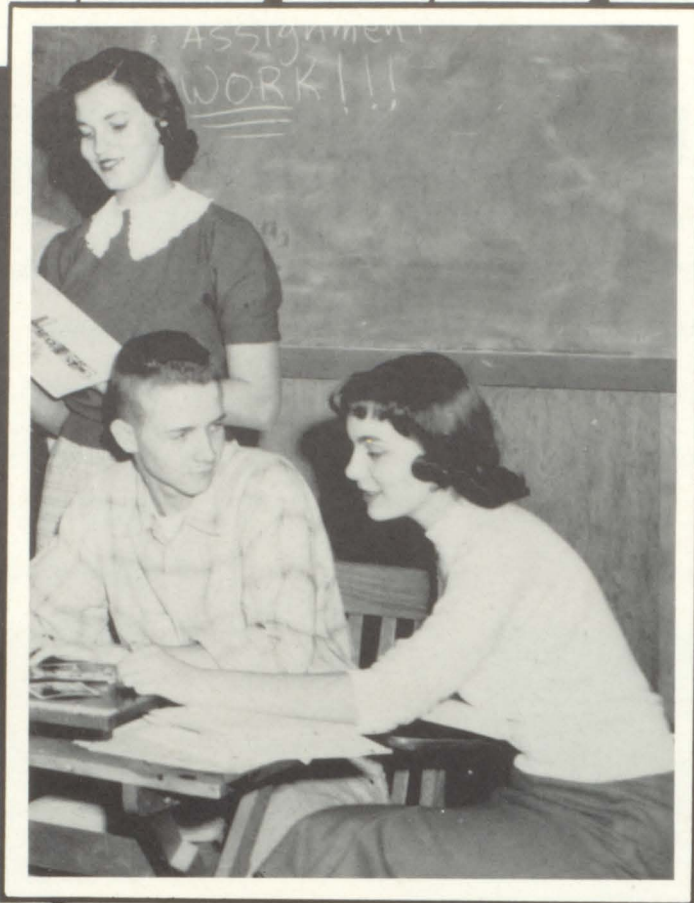
United Cement, Lime and Gypsum Workers  
International Union, Local #85

Watson Brothers Drug Store

Western Auto Associate

White's Department Store

Wright's Service Station



There were times we thought we wouldn't,  
 But we finally got it done;  
 It took a lot of effort,  
 But we had a lot of fun.

- Marty, Pat and Walt.

## THE STAFF

Editor . . . . .	Martha Branson
Associate Editor . . . . .	Pat Sheley
Business Manager . . . . .	Walt Brauer
Business Staff . . . . .	Bob Rhodes
	Lynn Milliken
Art Work . . . . .	Martie Travis
Typists . . . . .	Lillie Willis
	Barbara Ballentine
	Alice Matthews



